

CSI KND BMHEC's

**CSI College
Of Commerce**
D h a r w a d

**Student Satisfaction Survey
on
Teaching Learning Process**

2023-24

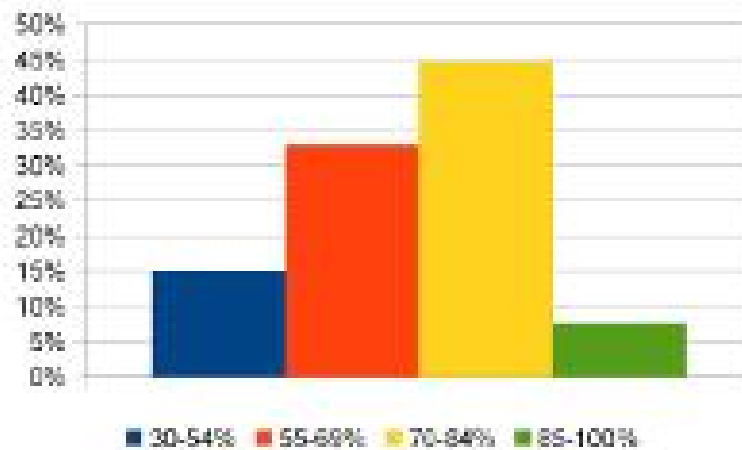
Index

Sl. No.	Class	Page No.
1	B Com I	3
2	B Com II	12
3	B Com III	21
4	B C A I	30
5	B C A II	39
6	B C A III	48
7	M Com I	57
8	M Com II	66

B. Com I

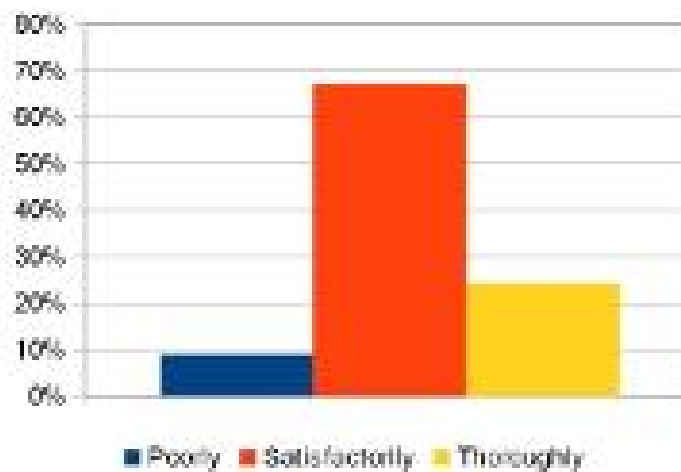
1. How much of the syllabus was covered in the class?

30-54%	15%
55-69%	33%
70-84%	45%
85-100%	8%



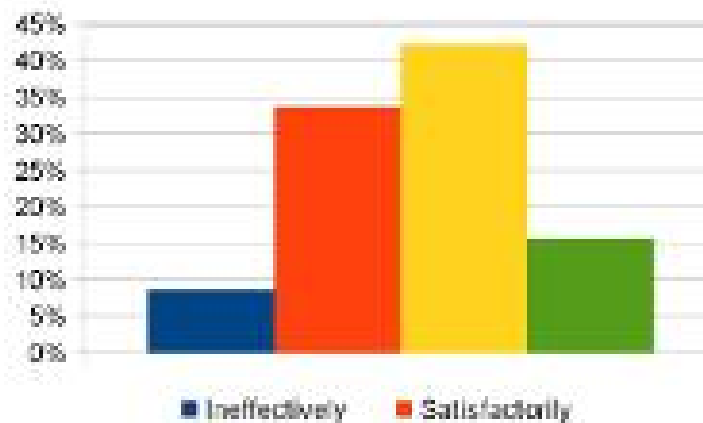
2. How well do the Teachers prepare for the classes?

Poorly	9%
Satisfactorily	67%
Thoroughly	24%



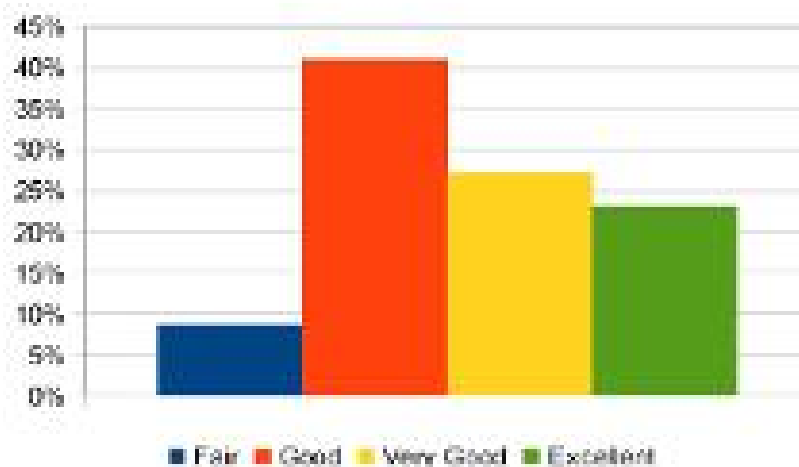
3. How well are the Teachers able to communicate?

Ineffectively	9%
Satisfactorily	34%
Effectively	42%
Very effectively	16%



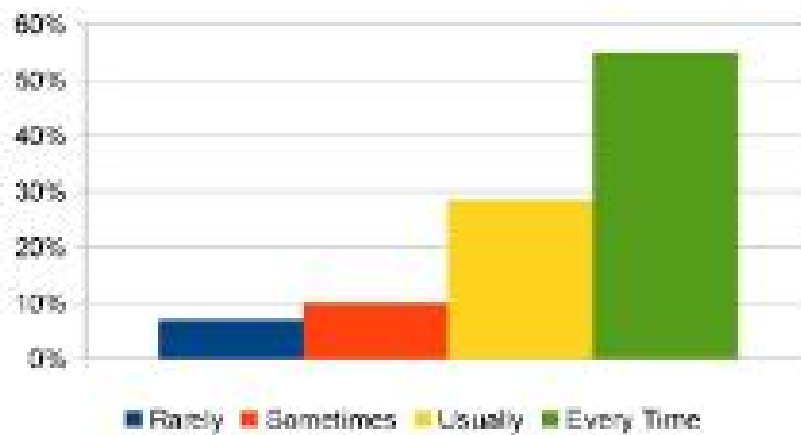
d. The Teacher's approach to teaching can be described as

Fair	9%
Good	41%
Very Good	27%
Excellent	23%



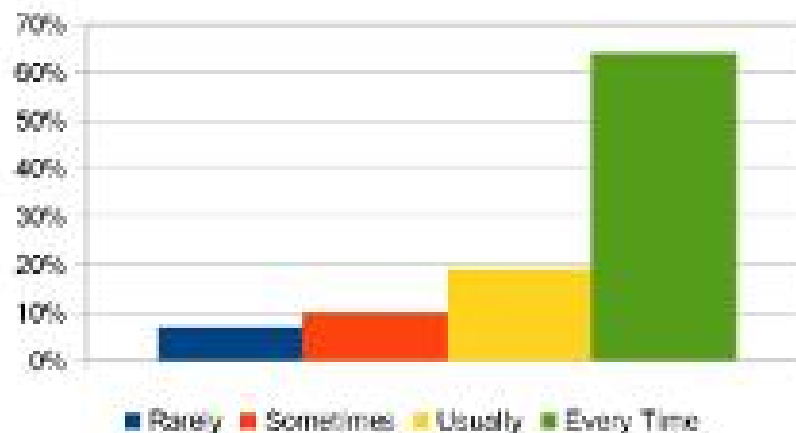
5. Were internal tests conducted on time?

Rarely	7%
Sometimes	10%
Usually	28%
Every Time	55%



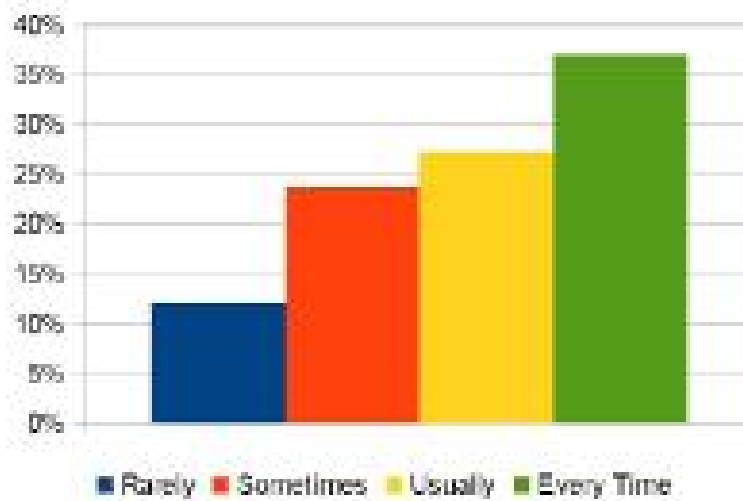
6. Are you given home assignments?

Rarely	7%
Sometimes	10%
Usually	19%
Every Time	64%



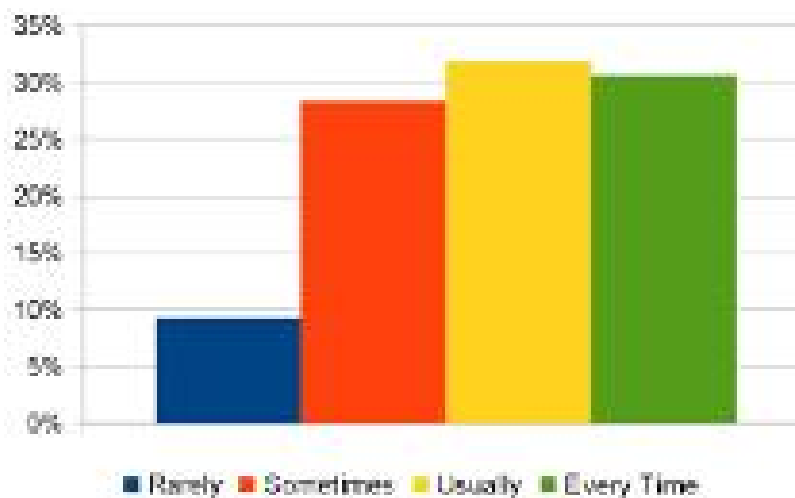
7. Is your performance in Tests/ assignment discussed with you?

Rarely	12%
Sometimes	24%
Usually	27%
Every Time	37%



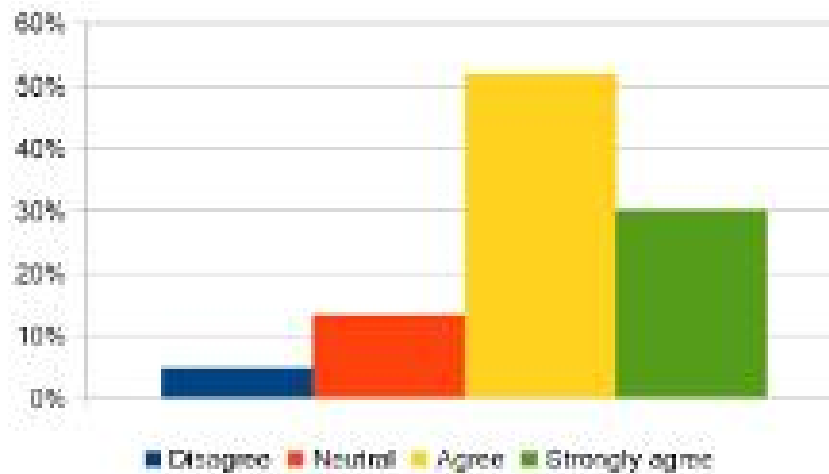
8. Teachers encourage students in preparing and presenting seminars.

Rarely	9%
Sometimes	28%
Usually	32%
Every Time	31%



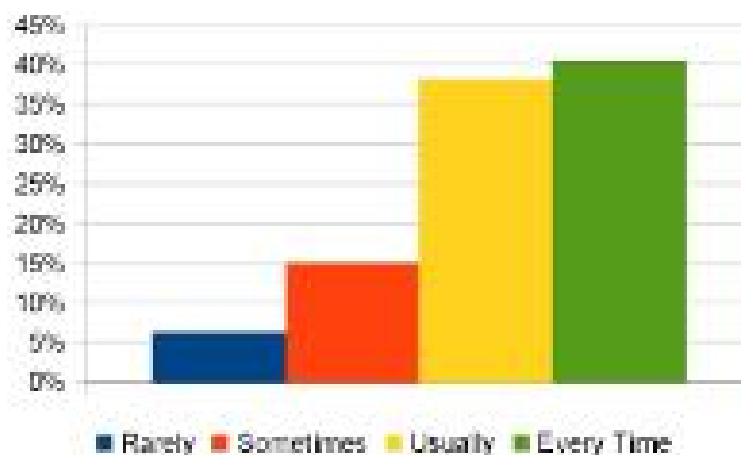
9. The College provides multiple opportunities to learn and grow.

Disagree	5%
Neutral	13%
Agree	52%
Strongly agree	30%



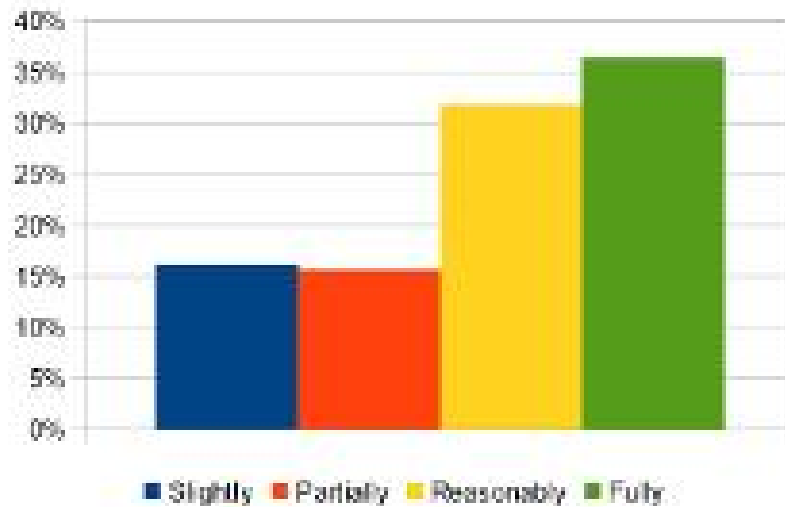
10. The Teachers illustrate the concepts through examples and illustrations

Rarely	6%
Sometimes	15%
Usually	38%
Every Time	40%



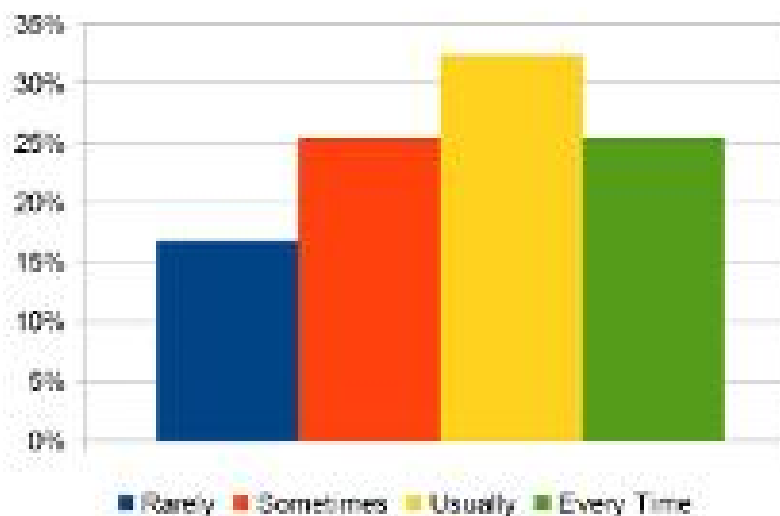
11. The Teachers identify your strengths and encourage you providing tight level of challenges

Slightly	16%
Partially	16%
Reasonably	32%
Fully	36%



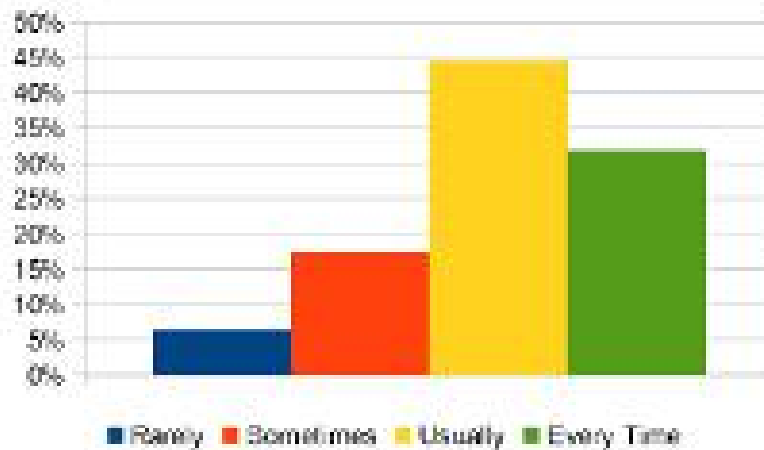
12. Teachers are able to identify your weaknesses and help you to overcome them.

Rarely	17%
Sometimes	25%
Usually	32%
Every Time	25%



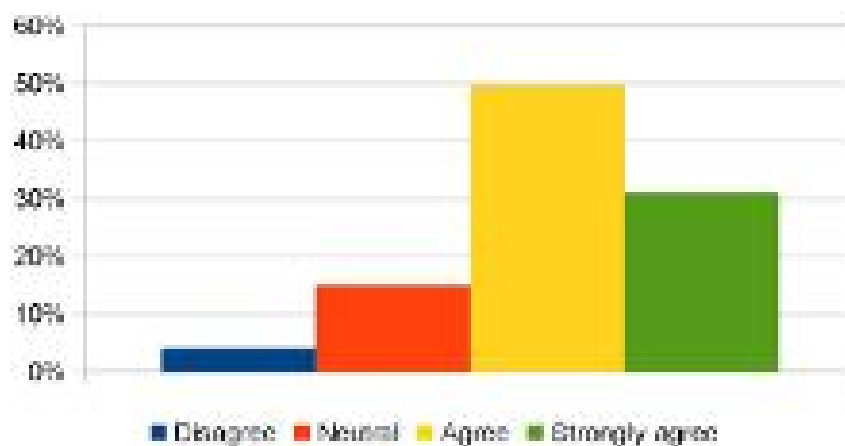
13. The College makes efforts to engage students in the monitoring, review and continuous quality improvement of teaching learning process.

Rarely	6%
Sometimes	17%
Usually	45%
Every Time	32%



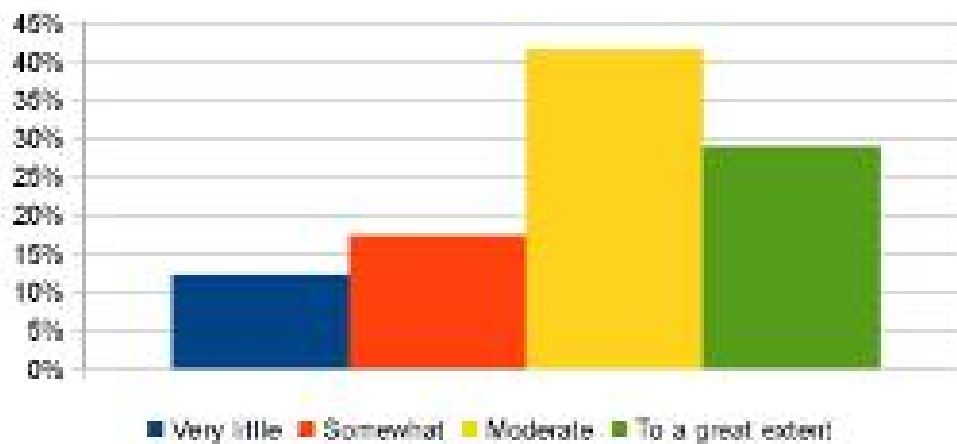
14. Teachers encourage you to participate in extracurricular activities.

Disagree	4%
Neutral	15%
Agree	50%
Strongly agree	31%



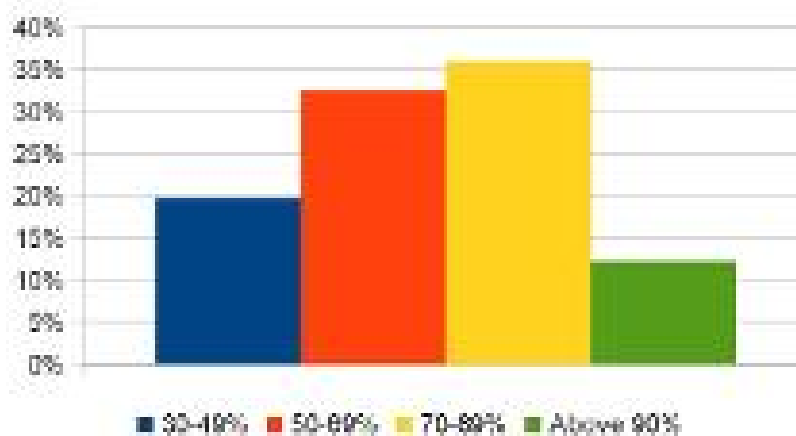
15. Efforts are made by the College/Teacher to inculcate soft skills, life skills and employability skills to make you ready for the world of work.

Very little	12%
Somewhat	17%
Moderate	42%
To a great extent	29%



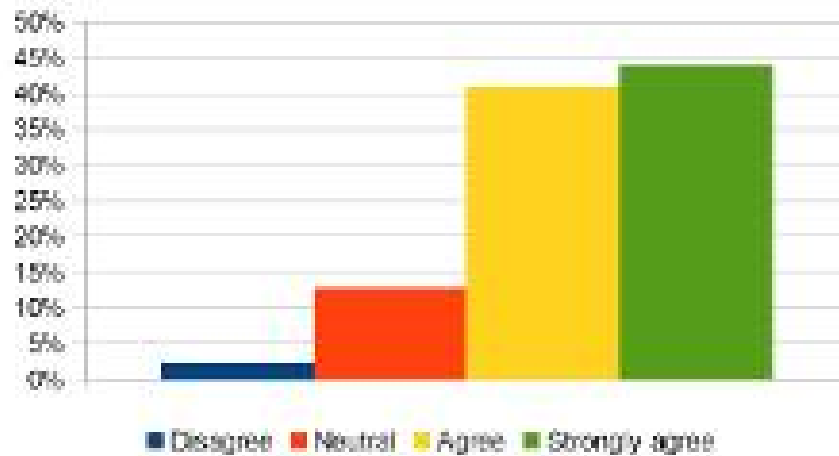
16. What percentage of Teachers use ICT tools while teaching.

30-49%	20%
50-69%	32%
70-89%	36%
Above 90%	12%



17. The overall quality of teaching-learning process in your College is very good.

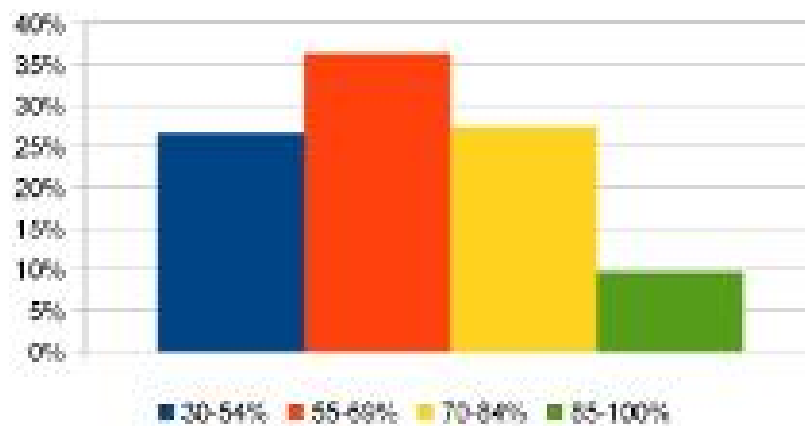
Disagree	2%
Neutral	13%
Agree	41%
Strongly agree	44%



B. Com II

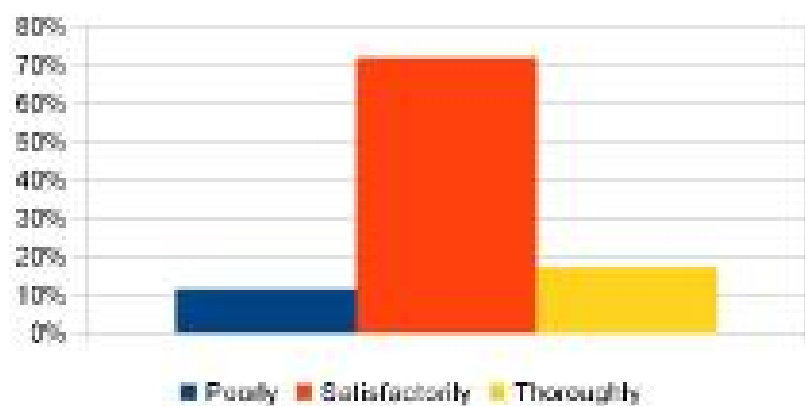
1. How much of the syllabus was covered in the class?

30-54%	27%
55-69%	36%
70-84%	27%
85-100%	10%



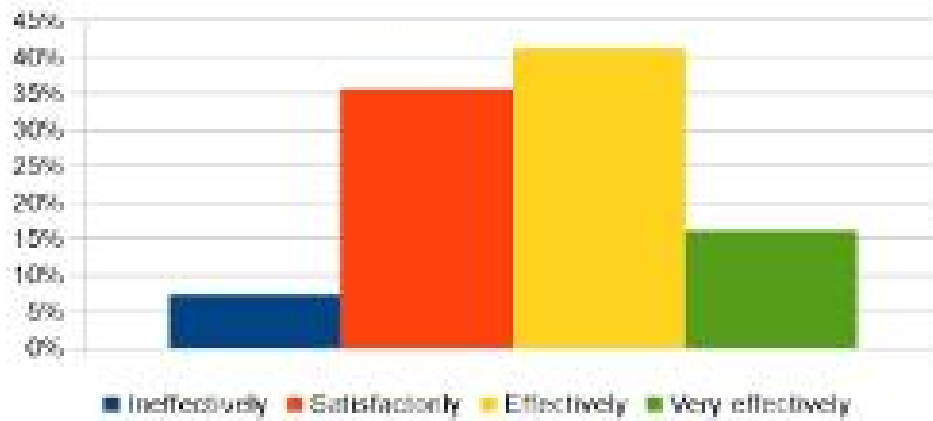
2. How well do the Teachers prepare for the classes?

Poorly	11%
Satisfactorily	72%
Thoroughly	17%



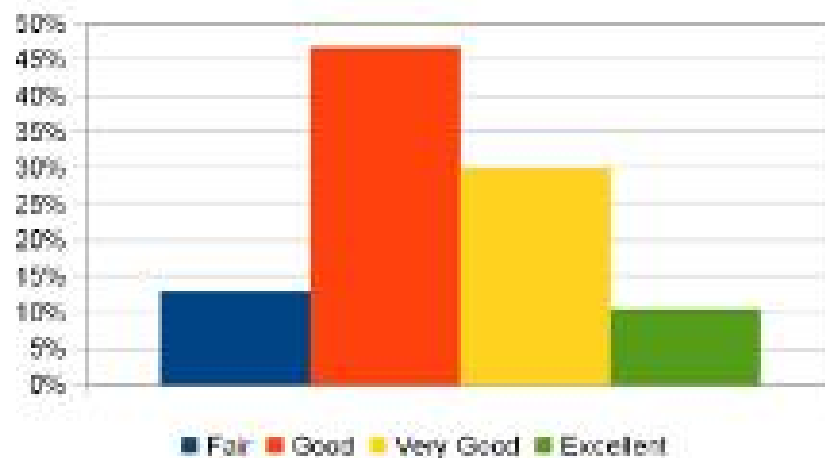
3. How well are the Teachers able to communicate?

Ineffectively	7%
Satisfactorily	35%
Effectively	41%
Very effectively	16%



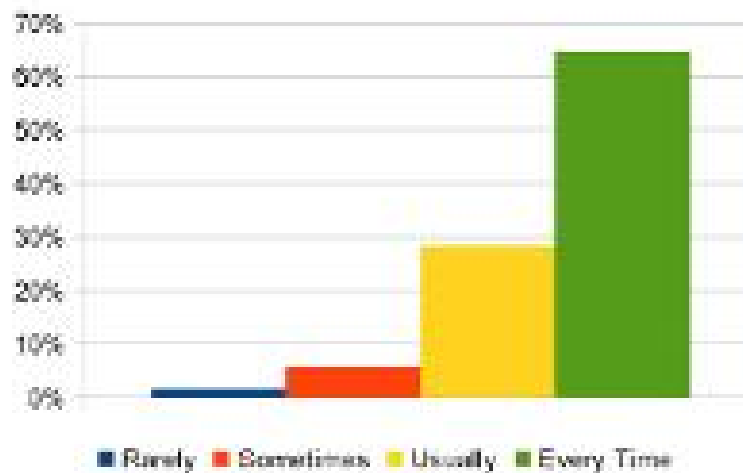
4. The Teacher's approach to teaching can be described as

Fair	13%
Good	47%
Very Good	30%
Excellent	10%



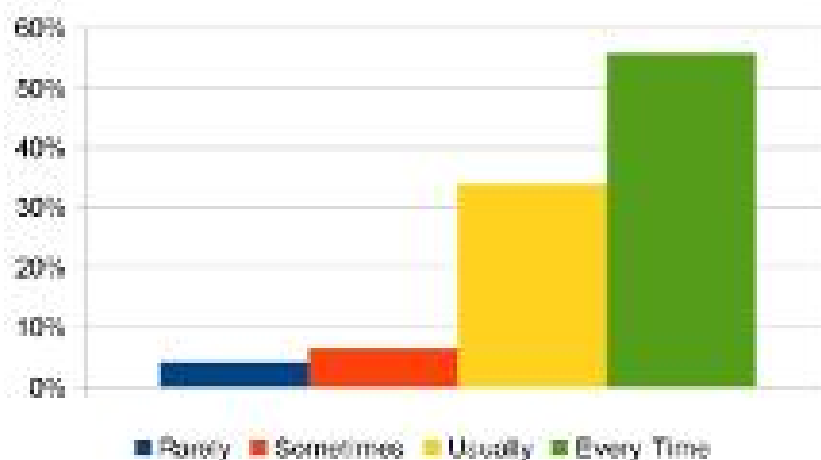
5. Were internal tests conducted on time?

Rarely	2%
Sometimes	6%
Usually	20%
Every Time	65%



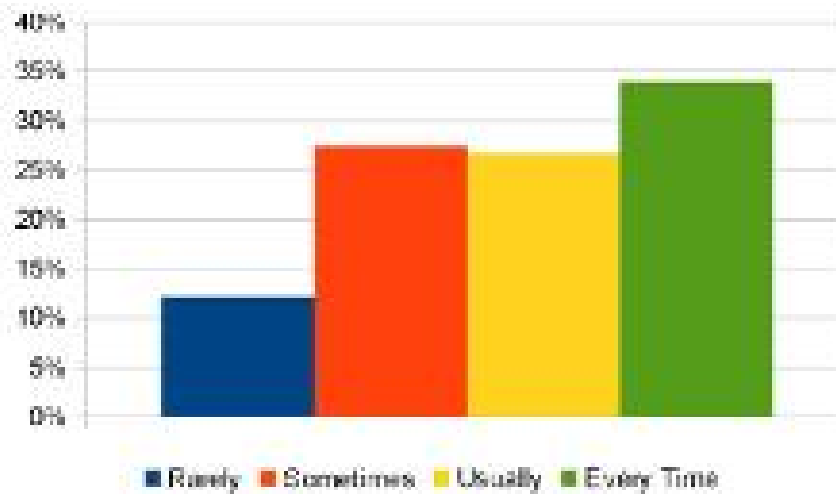
6. Are you given home assignments?

Rarely	4%
Sometimes	6%
Usually	34%
Every Time	50%



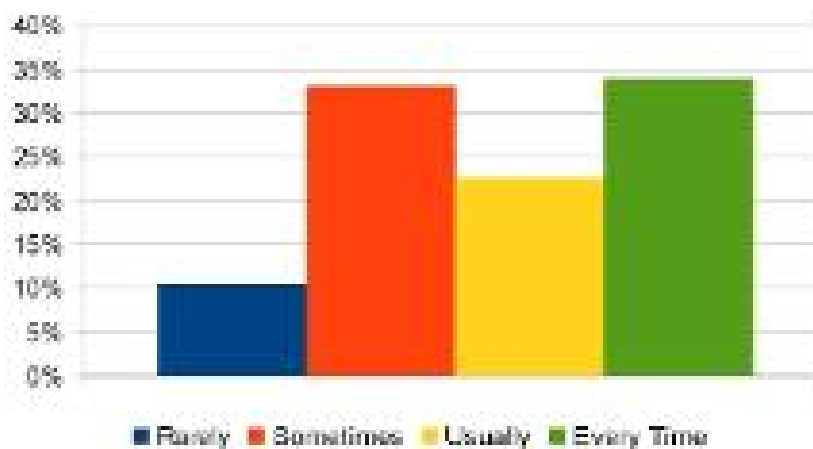
7. Is your performance in Tests/ assignment discussed with you?

Rarely	12%
Sometimes	27%
Usually	27%
Every Time	34%



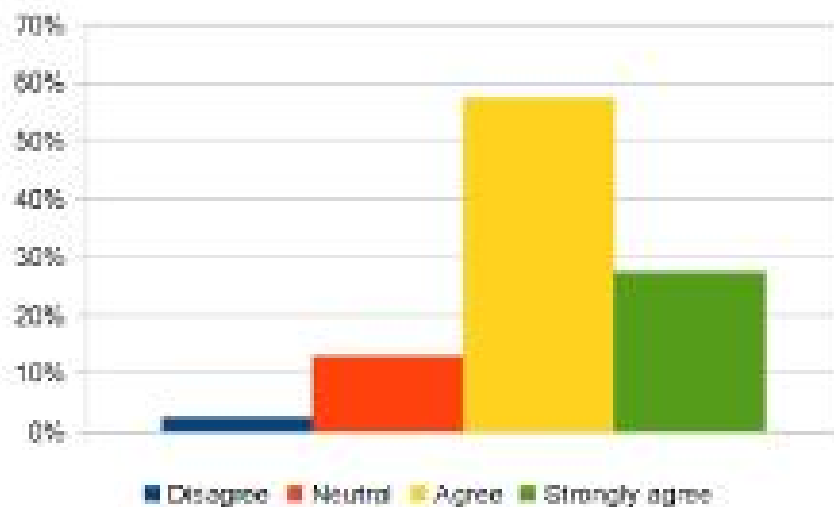
8. Teachers encourage students in preparing and presenting seminars.

Rarely	10%
Sometimes	33%
Usually	23%
Every Time	34%



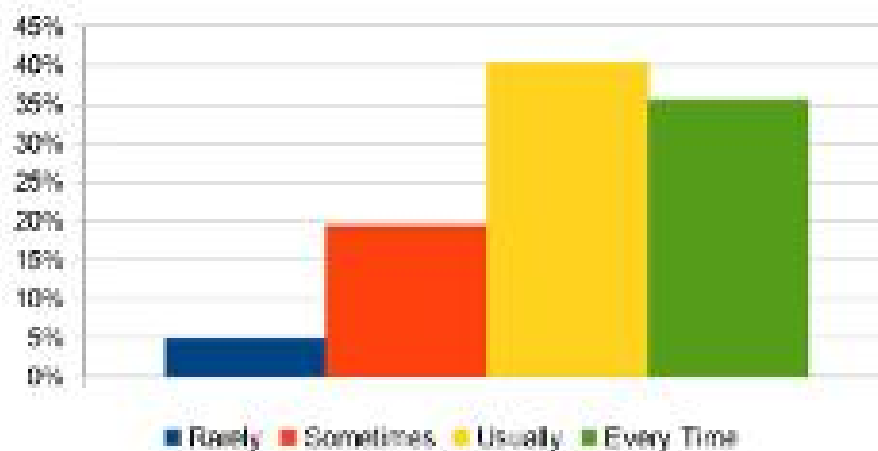
9. The College provides multiple opportunities to learn and grow.

Disagree	2%
Neutral	13%
Agree	57%
Strongly agree	27%



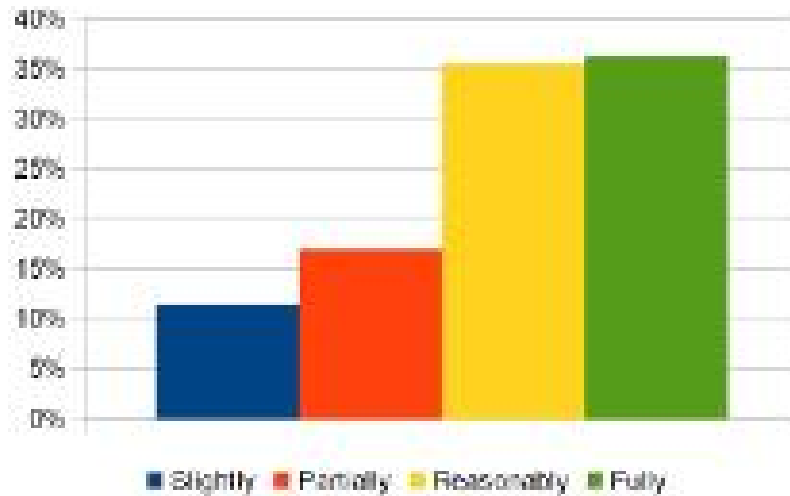
10. The Teachers illustrate the concepts through examples and illustrations

Rarely	5%
Sometimes	19%
Usually	40%
Every Time	35%



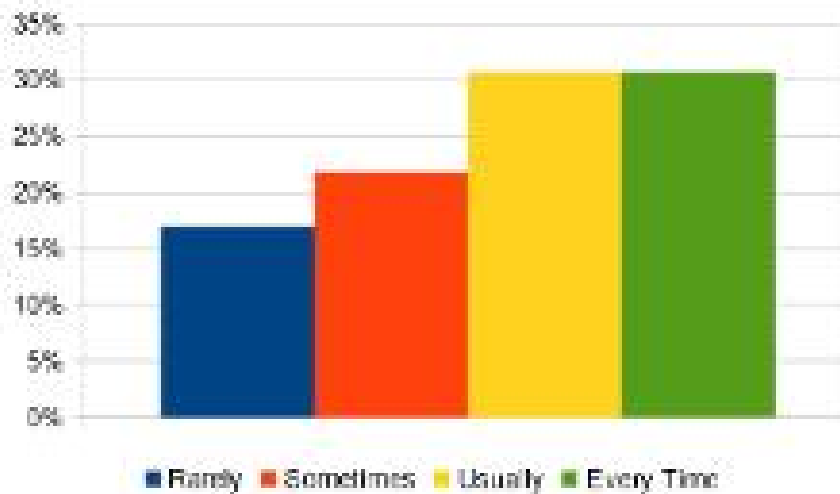
11. The Teachers identify your strengths and encourage you providing tight level of challenges

Slightly	11%
Partially	17%
Reasonably	35%
Fully	36%



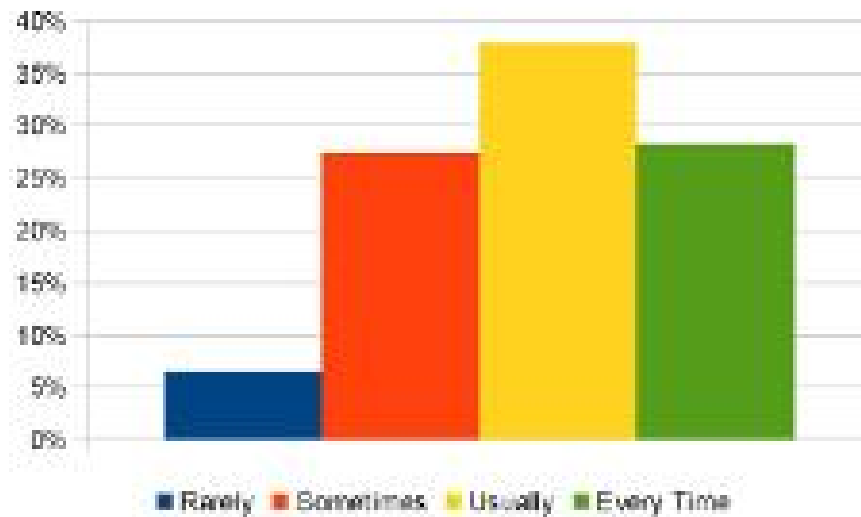
12. Teachers are able to identify your weaknesses and help you to overcome them.

Rarely	17%
Sometimes	22%
Usually	31%
Every Time	31%



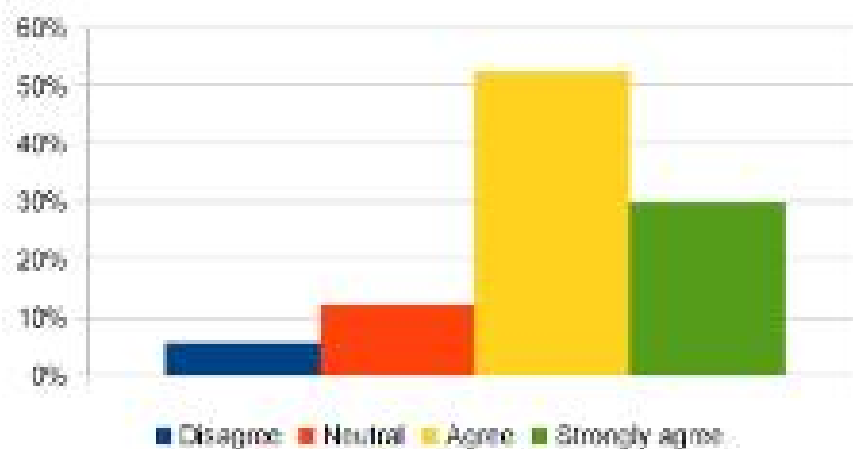
13. The College makes efforts to engage students in the monitoring, review and continuous quality improvement of teaching learning process.

Rarely	6%
Sometimes	27%
Usually	30%
Every Time	28%



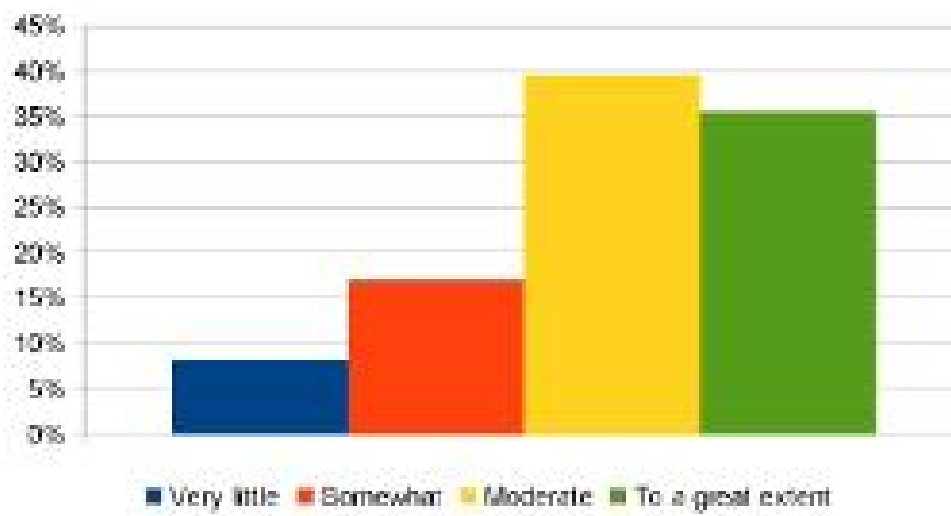
14. Teachers encourage you to participate in extracurricular activities.

Disagree	6%
Neutral	12%
Agree	52%
Strongly agree	30%



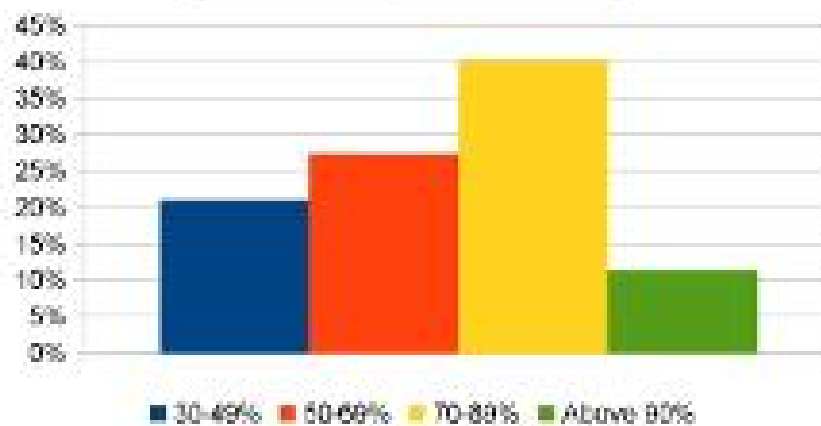
15. Efforts are made by the College/Teacher to inculcate soft skills, life skills and employability skills to make you ready for the world of work.

Very little	8%
Somewhat	17%
Moderate	40%
To a great extent	35%



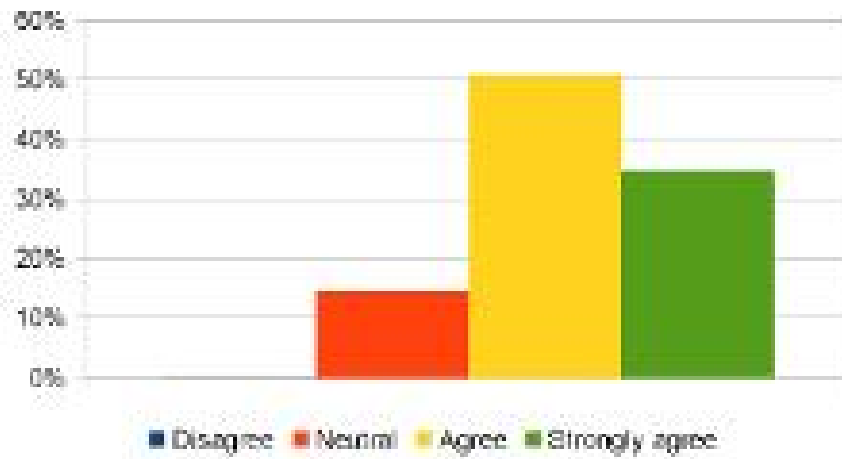
16. What percentage of Teachers use ICT tools while teaching.

30-49%	21%
50-69%	27%
70-89%	40%
Above 90%	11%



17. The overall quality of teaching-learning process in your College is very good.

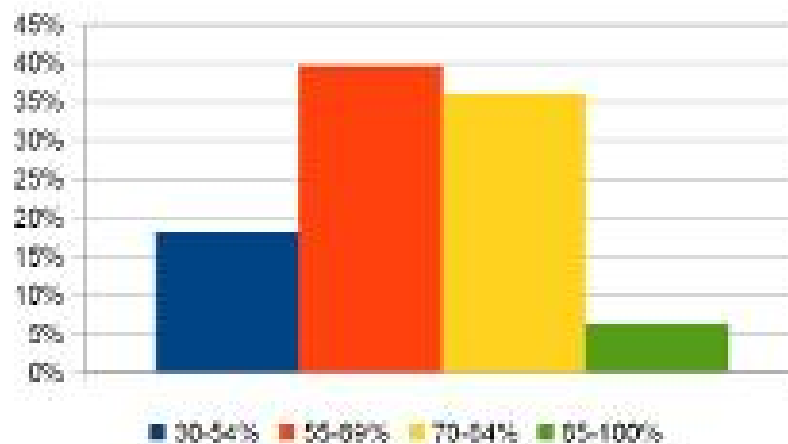
Disagree	0%
Neutral	15%
Agree	51%
Strongly agree	35%



B. Com III

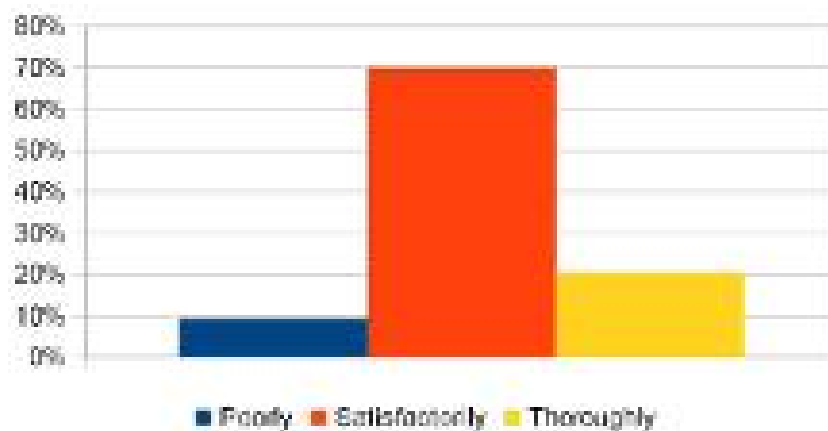
1. How much of the syllabus was covered in the class?

30-54%	18%
55-69%	40%
70-84%	36%
85-100%	6%



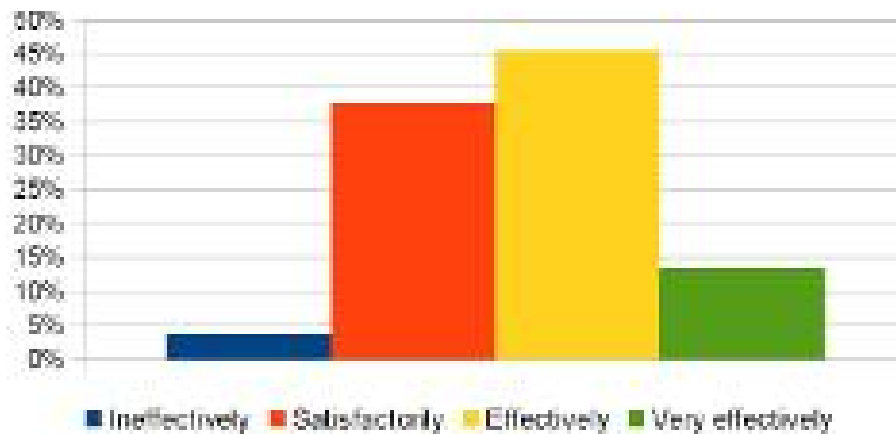
2. How well do the Teachers prepare for the classes?

Poorly	9%
Satisfactorily	70%
Thoroughly	21%



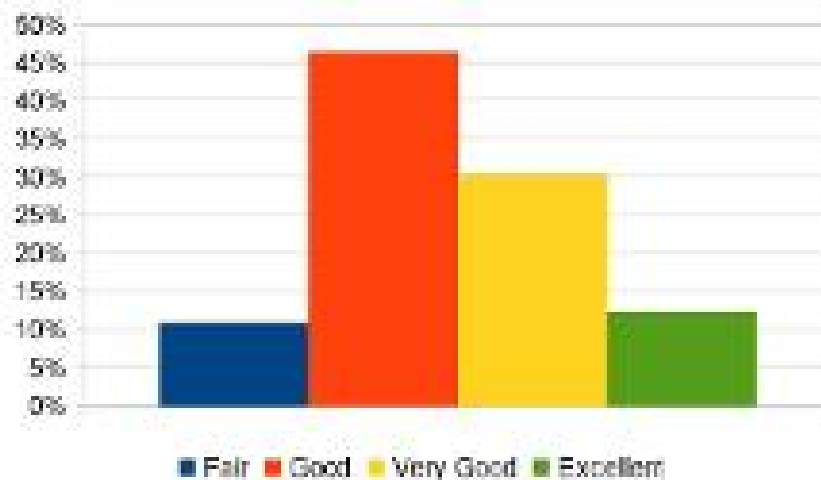
3. How well are the Teachers able to communicate?

Ineffectively	4%
Satisfactorily	38%
Effectively	45%
Very effectively	13%



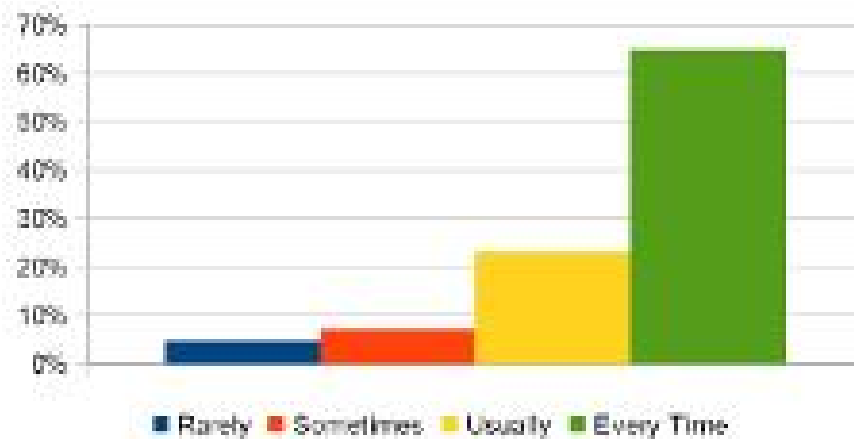
4. The Teacher's approach to teaching can be described as

Fair	11%
Good	46%
Very Good	30%
Excellent	12%



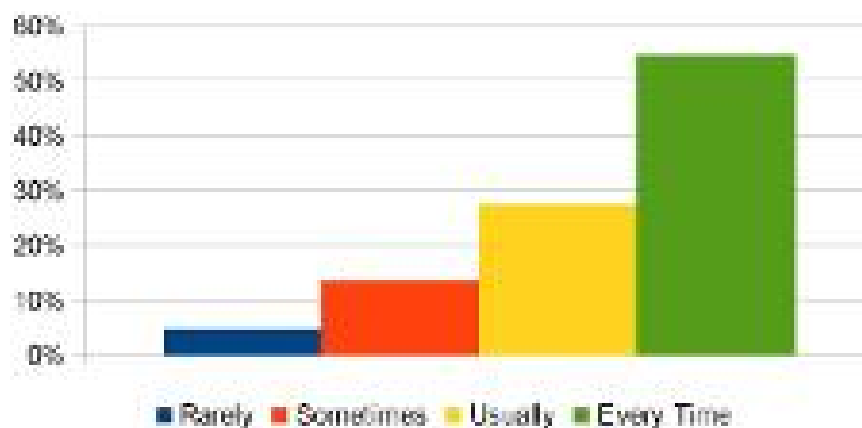
5. Were internal tests conducted on time?

Rarely	5%
Sometimes	7%
Usually	23%
Every Time	65%



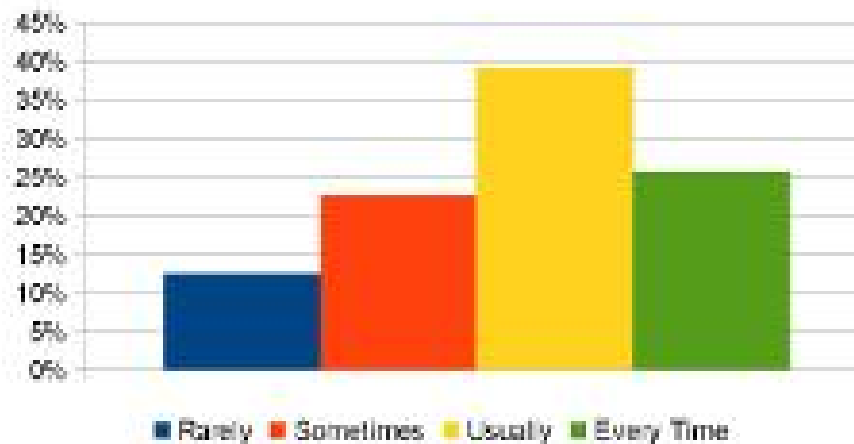
6. Are you given home assignments?

Rarely	5%
Sometimes	13%
Usually	27%
Every Time	55%



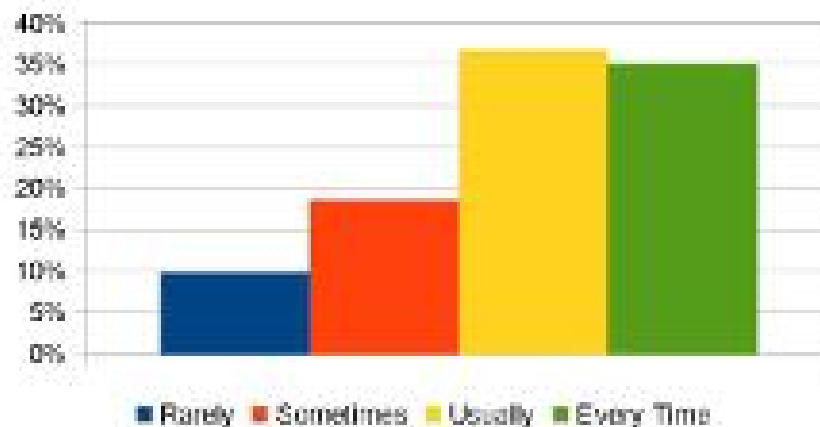
7. Is your performance in Tests/ assignment discussed with you?

Rarely	12%
Sometimes	23%
Usually	39%
Every Time	26%



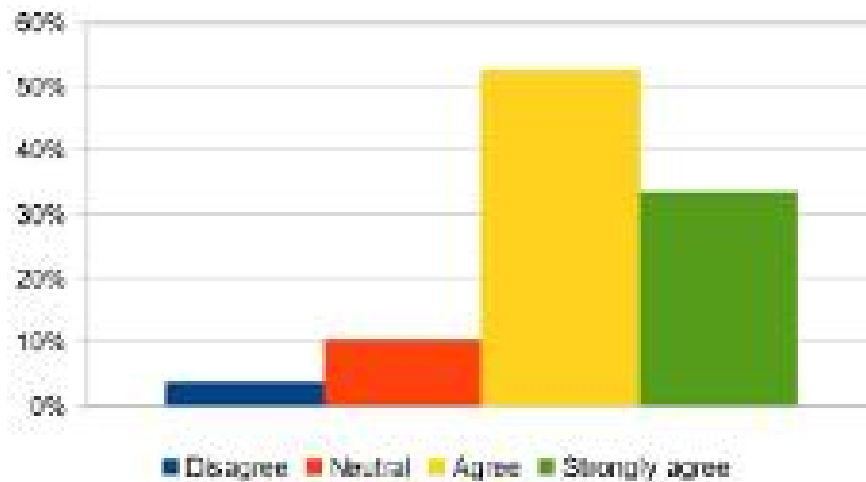
8. Teachers encourage students in preparing and presenting seminars.

Rarely	10%
Sometimes	19%
Usually	37%
Every Time	35%



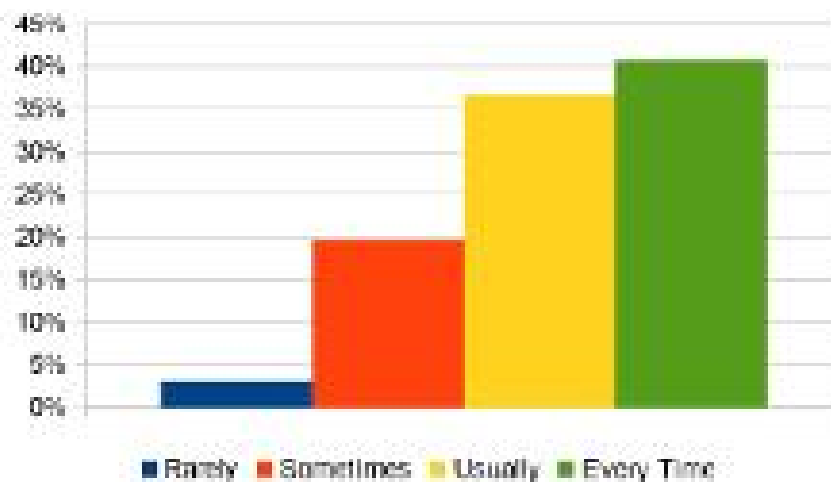
9. The College provides multiple opportunities to learn and grow.

Disagree	4%
Neutral	10%
Agree	53%
Strongly agree	34%



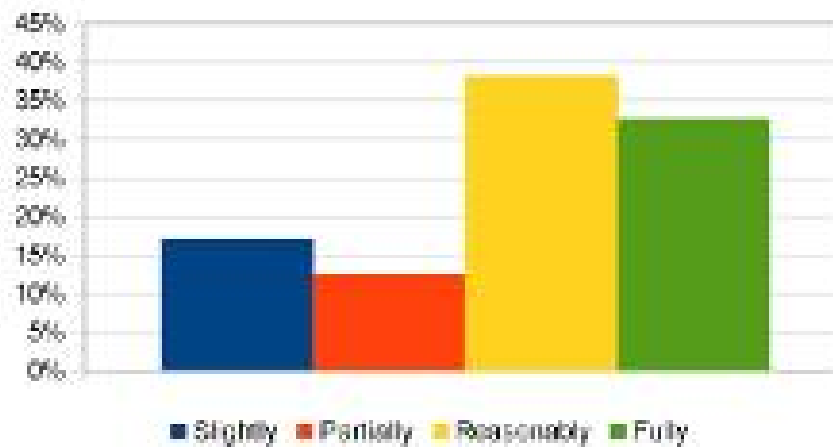
10. The Teachers illustrate the concepts through examples and illustrations

Rarely	3%
Sometimes	20%
Usually	37%
Every Time	41%



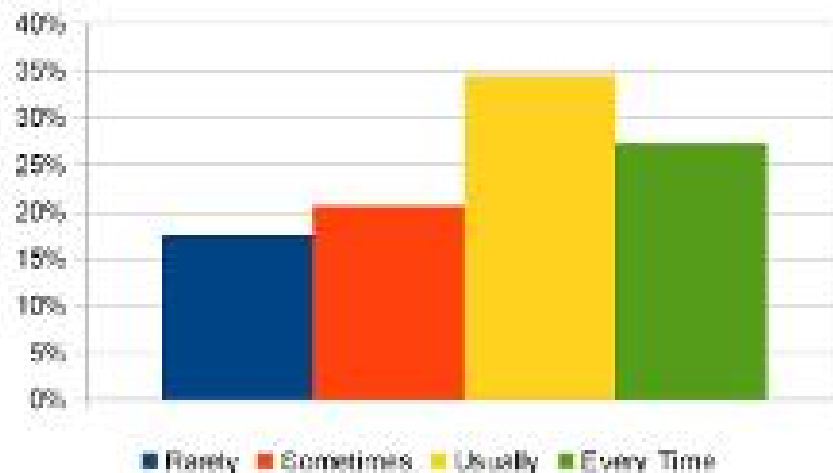
11. The Teachers identify your strengths and encourage you providing right level of challenges

Slightly	17%
Partially	12%
Reasonably	38%
Fully	32%



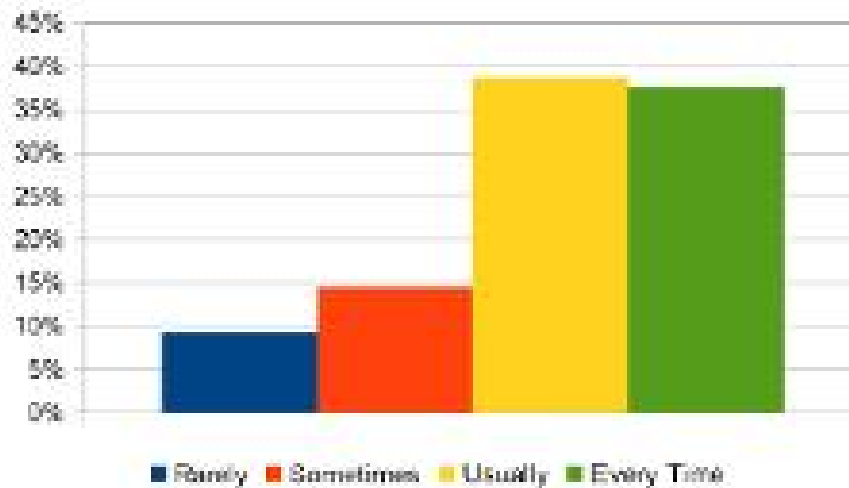
12. Teachers are able to identify your weaknesses and help you to overcome them.

Rarely	18%
Sometimes	21%
Usually	35%
Every Time	27%



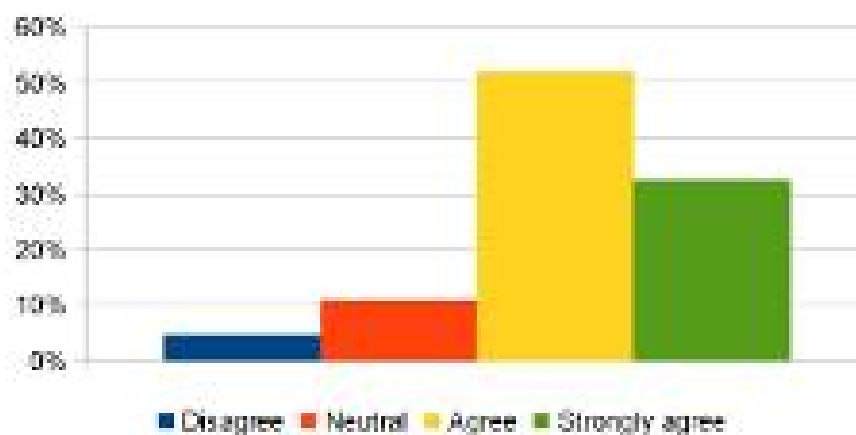
13. The College makes efforts to engage students in the monitoring, review and continuous quality improvement of teaching learning process.

Rarely	9%
Sometimes	14%
Usually	39%
Every Time	38%



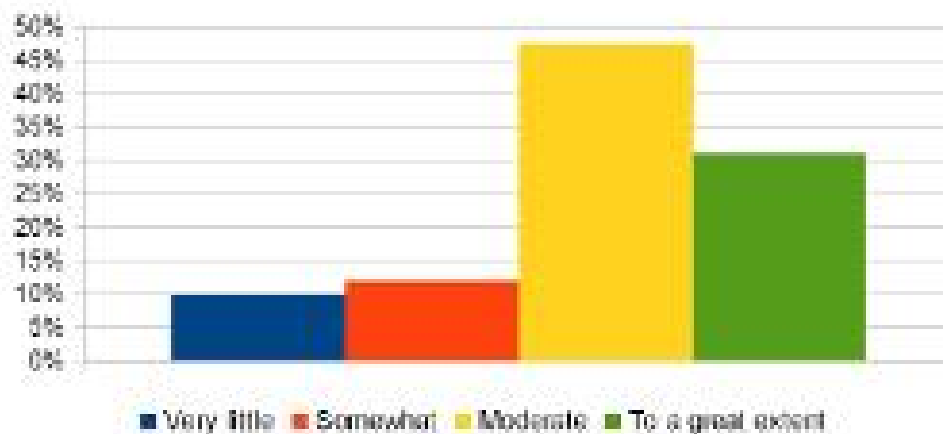
14. Teachers encourage you to participate in extracurricular activities.

Disagree	5%
Neutral	11%
Agree	52%
Strongly agree	32%



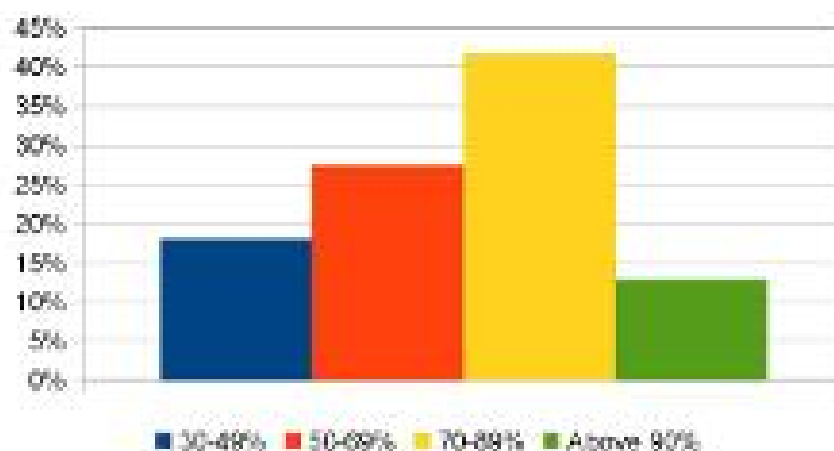
15. Efforts are made by the College/Teacher to inculcate soft skills, life skills and employability skills to make you ready for the world of work.

Very little	10%
Somewhat	12%
Moderate	47%
To a great extent	31%



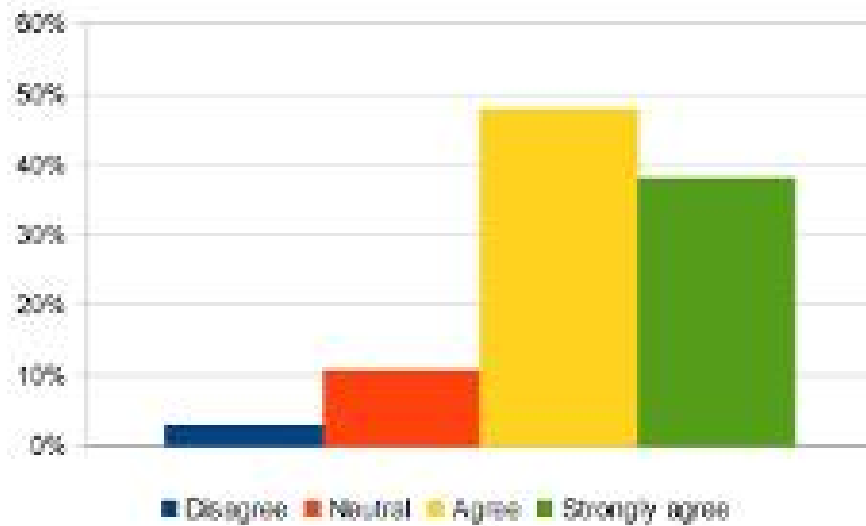
16. What percentage of Teachers use ICT tools while teaching.

30-49%	18%
50-69%	27%
70-89%	42%
Above 90%	13%



17. The overall quality of teaching-learning process in your College is very good.

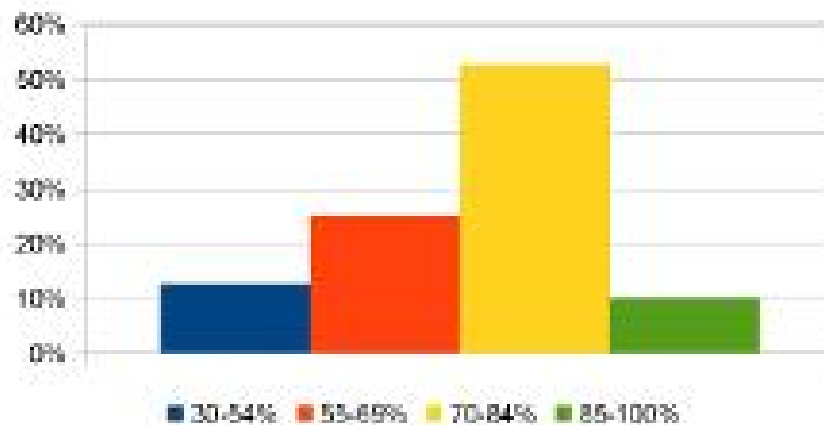
Disagree	3%
Neutral	11%
Agree	48%
Strongly agree	38%



B. C. A. I

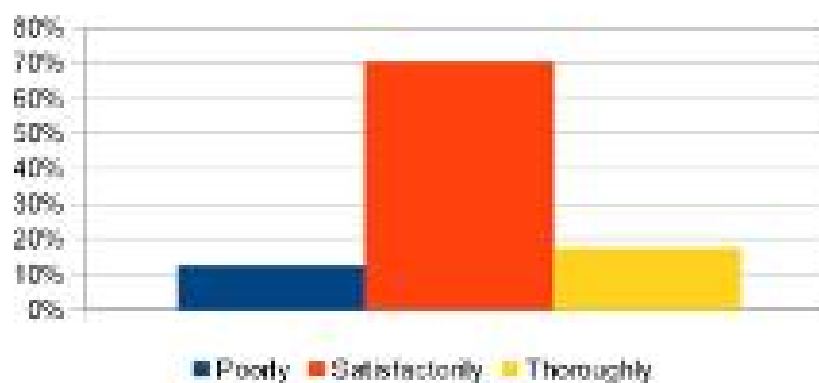
1. How much of the syllabus was covered in the class?

30-54%	13%
55-69%	25%
70-84%	53%
85-100%	10%



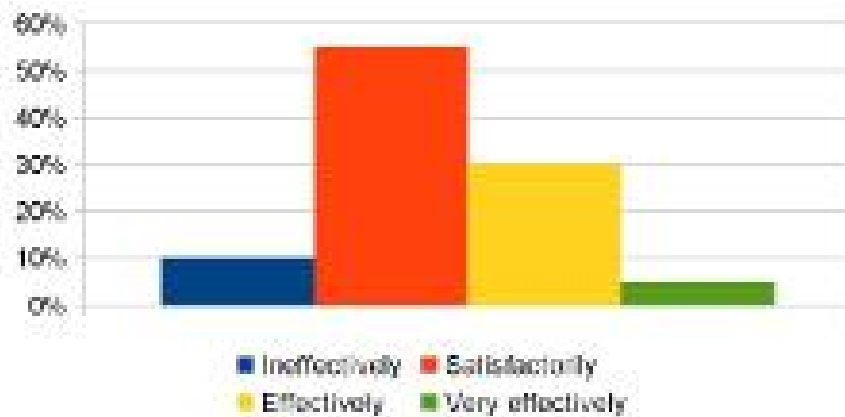
2. How well do the Teachers prepare for the classes?

Poorly	2
Satisfactorily	23
Thoroughly	10



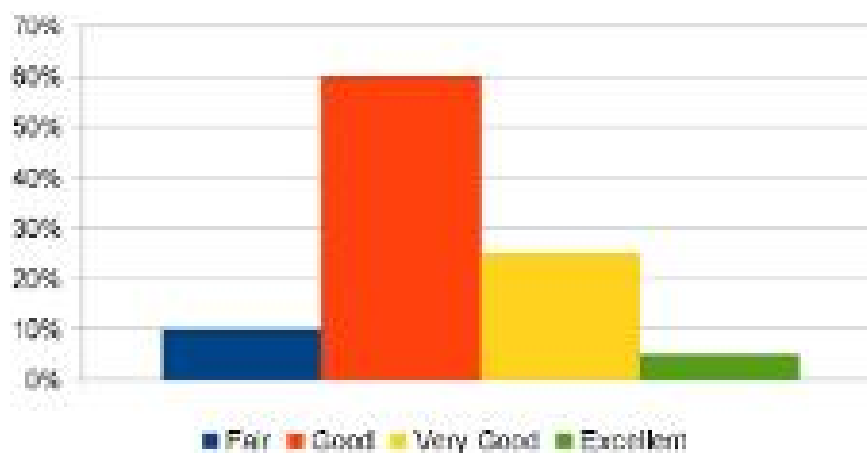
3. How well are the Teachers able to communicate?

Ineffectively	10%
Satisfactorily	55%
Effectively	30%
Very effectively	5%



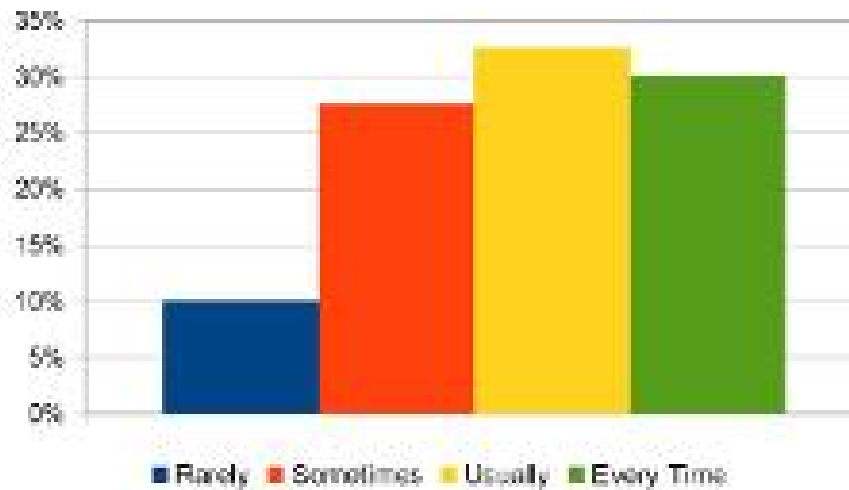
4. The Teacher's approach to teaching can be described as

Fair	10%
Good	60%
Very Good	25%
Excellent	5%



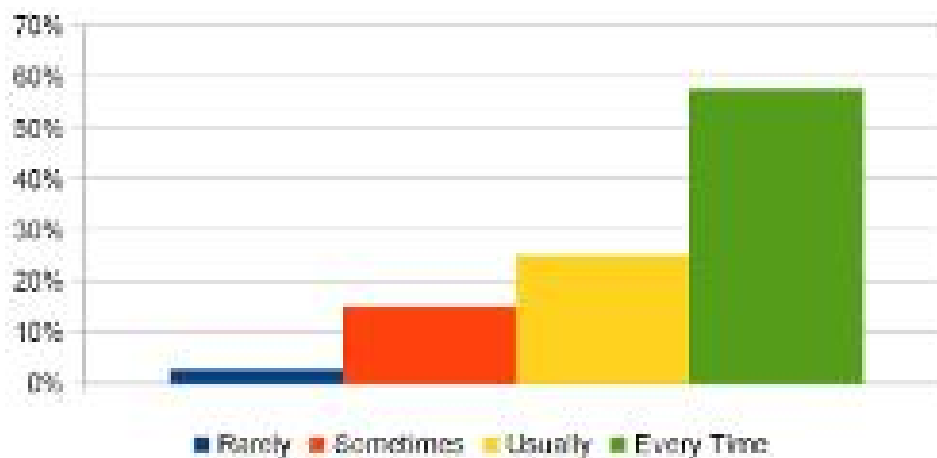
5. Were internal tests conducted on time?

Rarely	10%
Sometimes	28%
Usually	33%
Every Time	30%



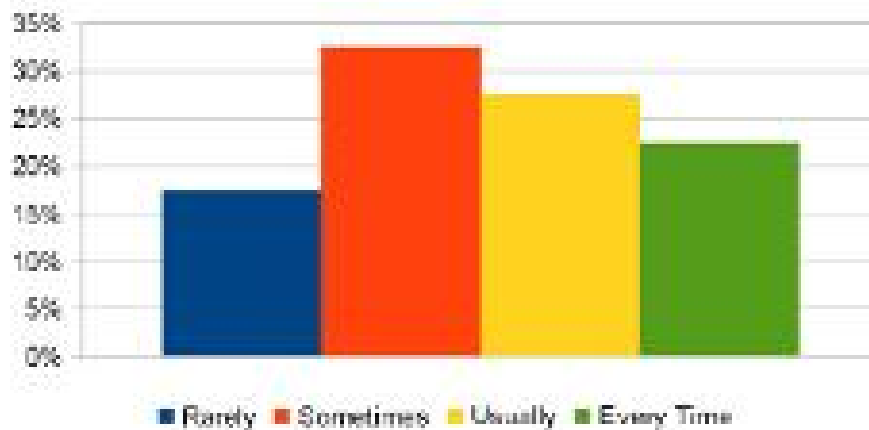
6. Are you given home assignments?

Rarely	3%
Sometimes	15%
Usually	25%
Every Time	58%



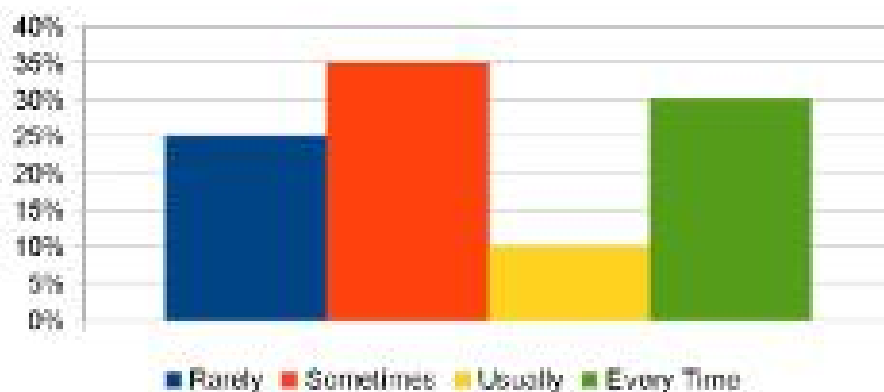
7. Is your performance in Tests/ assignment discussed with you?

Rarely	18%
Sometimes	33%
Usually	20%
Every Time	29%



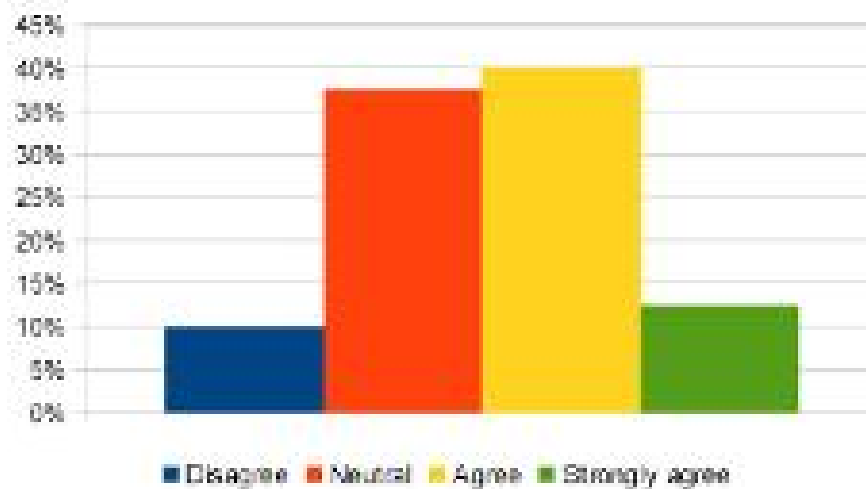
8. Teachers encourage students in preparing and presenting seminars.

Rarely	25%
Sometimes	35%
Usually	10%
Every Time	30%



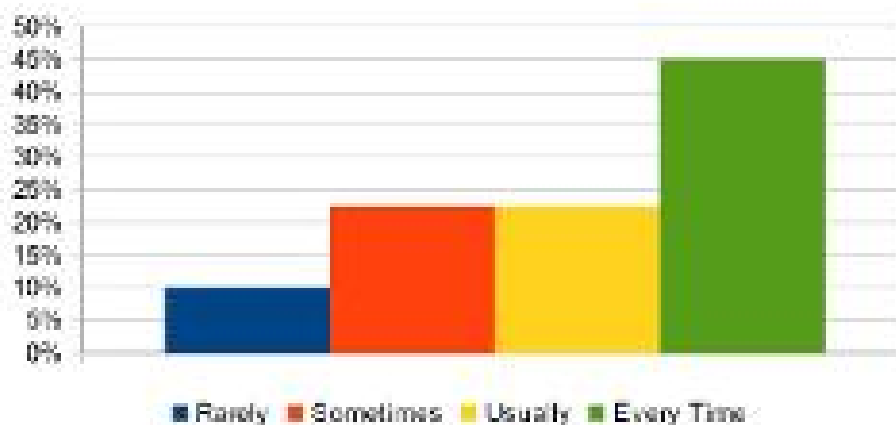
9. The College provides multiple opportunities to learn and grow.

Disagree	10%
Neutral	38%
Agree	40%
Strongly agree	13%



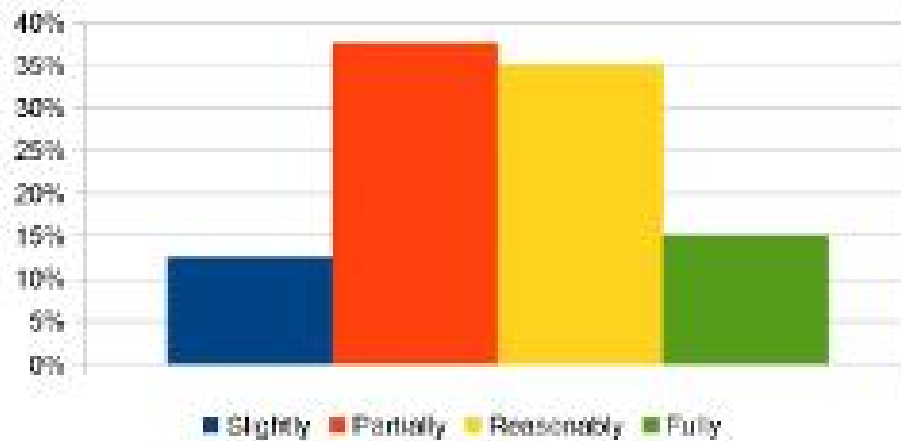
10. The Teachers illustrate the concepts through examples and illustrations

Rarely	10%
Sometimes	23%
Usually	23%
Every Time	45%



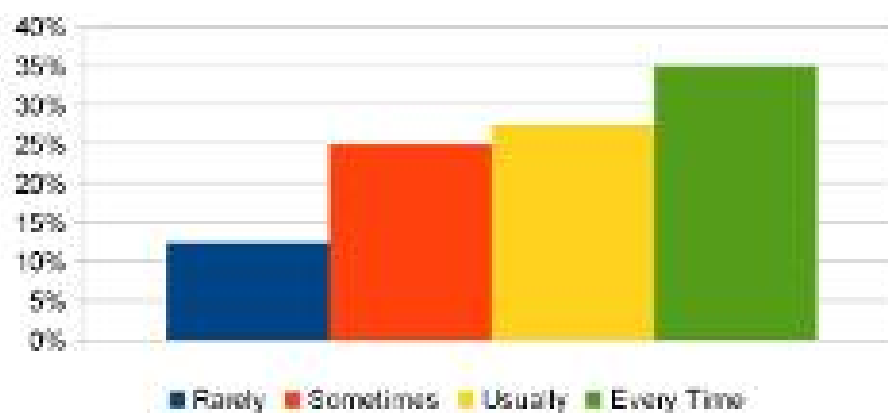
11. The Teachers identify your strengths and encourage you providing tight level of challenges

Slightly	13%
Partially	38%
Reasonably	35%
Fully	15%



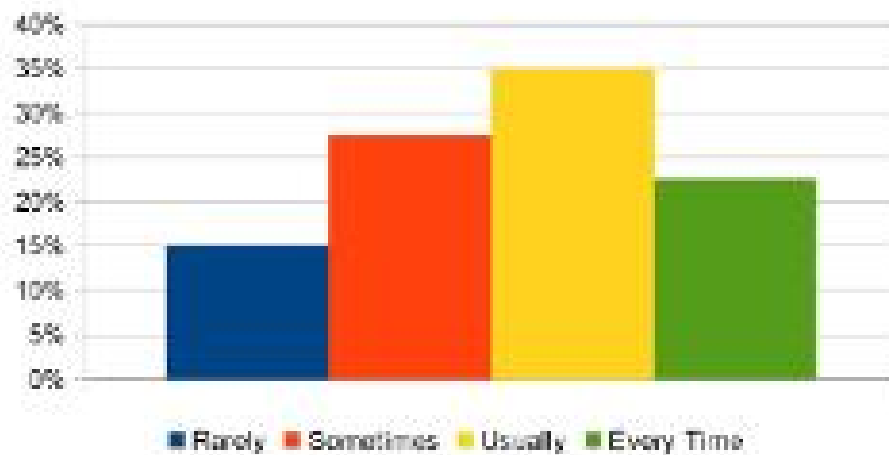
12. Teachers are able to identify your weaknesses and help you to overcome them.

Rarely	13%
Sometimes	25%
Usually	28%
Every Time	35%



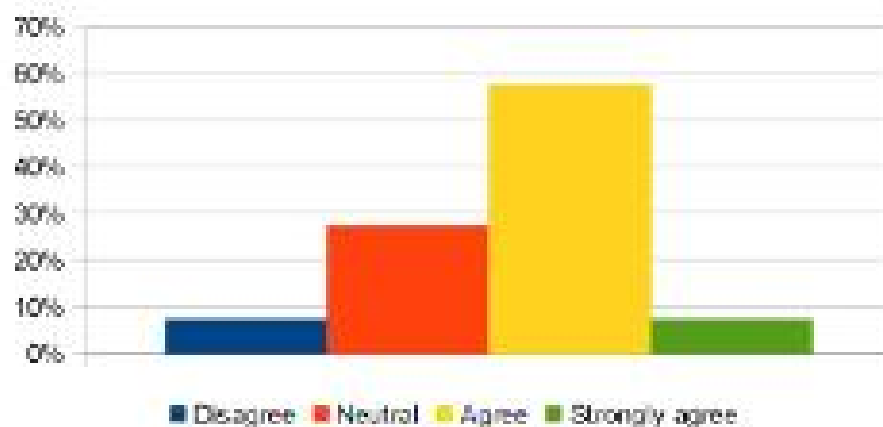
13. The College makes efforts to engage students in the monitoring, review and continuous quality improvement of teaching learning process.

Rarely	15%
Sometimes	28%
Usually	35%
Every Time	22%



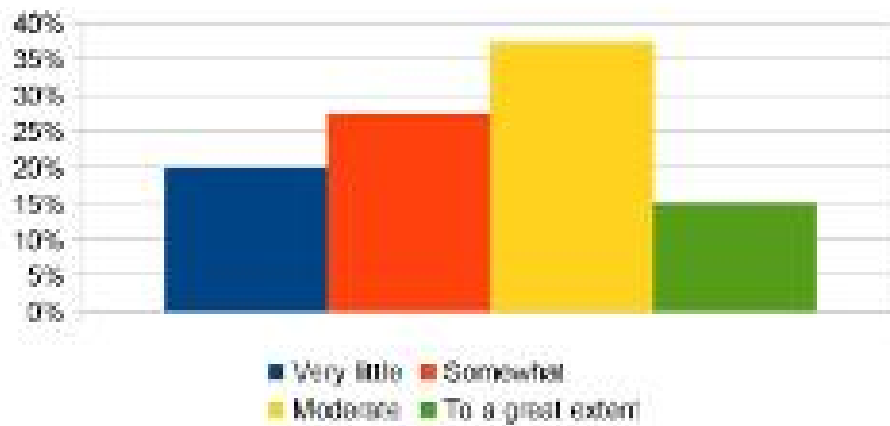
14. Teachers encourage you to participate in extracurricular activities.

Disagree	8%
Neutral	28%
Agree	58%
Strongly agree	8%



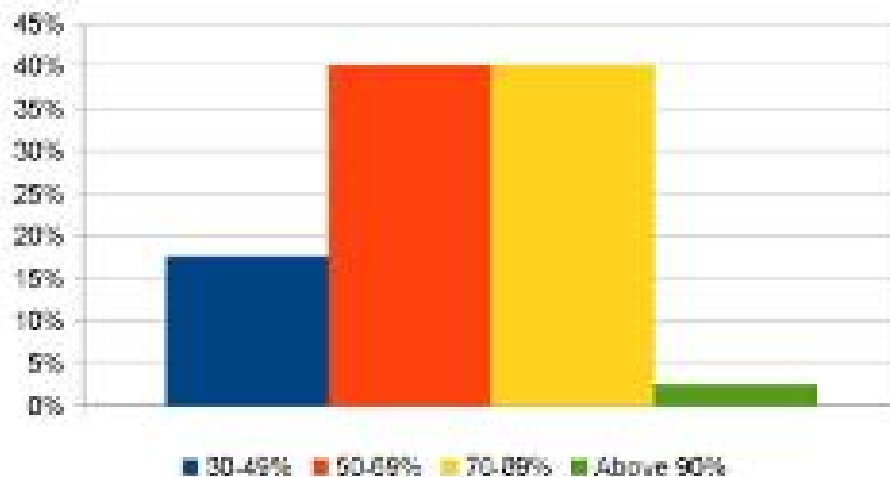
15. Efforts are made by the College/Teacher to inculcate soft skills, life skills and employability skills to make you ready for the world of work.

Very little	20%
Somewhat	28%
Moderate	30%
To a great extent	15%



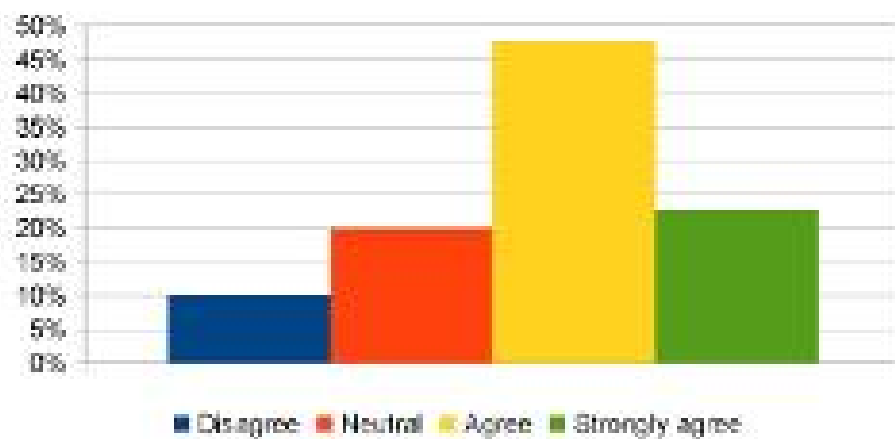
16. What percentage of Teachers use ICT tools while teaching.

30-49%	18%
50-69%	40%
70-89%	40%
Above 90%	3%



17. The overall quality of teaching-learning process in your College is very good.

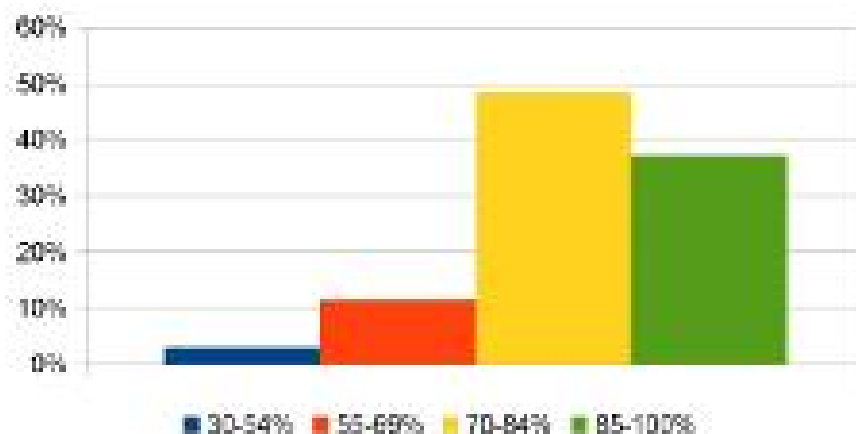
Disagree	10%
Neutral	20%
Agree	48%
Strongly agree	23%



B. C. A. II

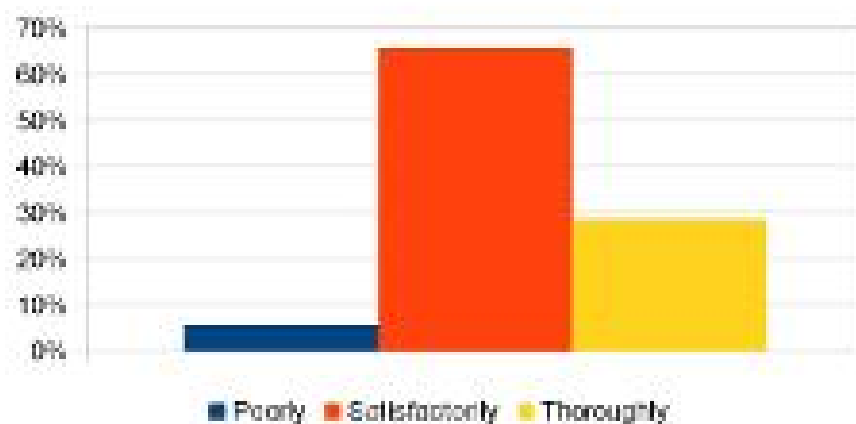
1. How much of the syllabus was covered in the class?

30-54%	3%
55-69%	11%
70-84%	49%
85-100%	37%



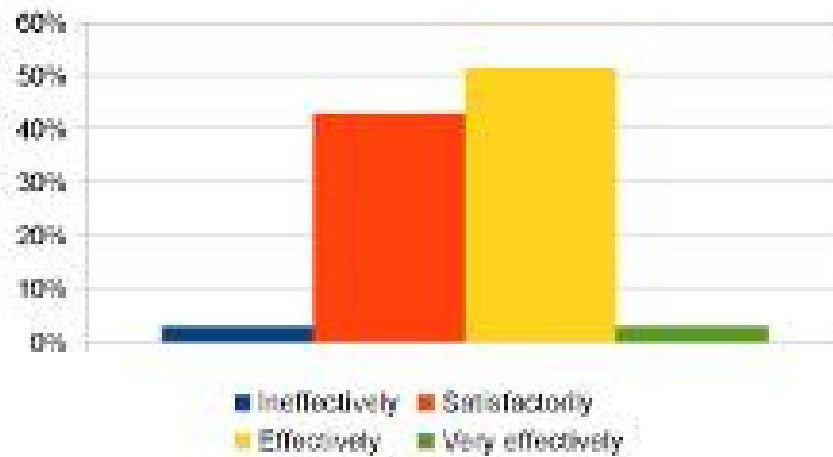
2. How well do the Teachers prepare for the classes?

Poorly	6%
Satisfactorily	66%
Thoroughly	29%



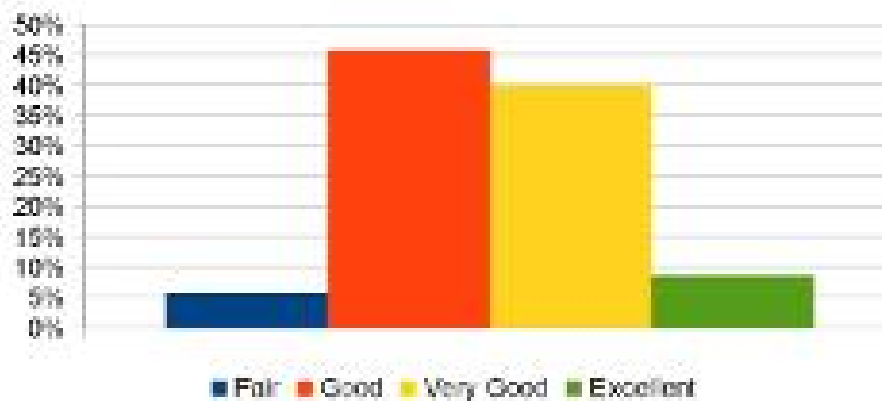
3. How well are the Teachers able to communicate?

Ineffectively	3%
Satisfactorily	43%
Effectively	51%
Very effectively	3%



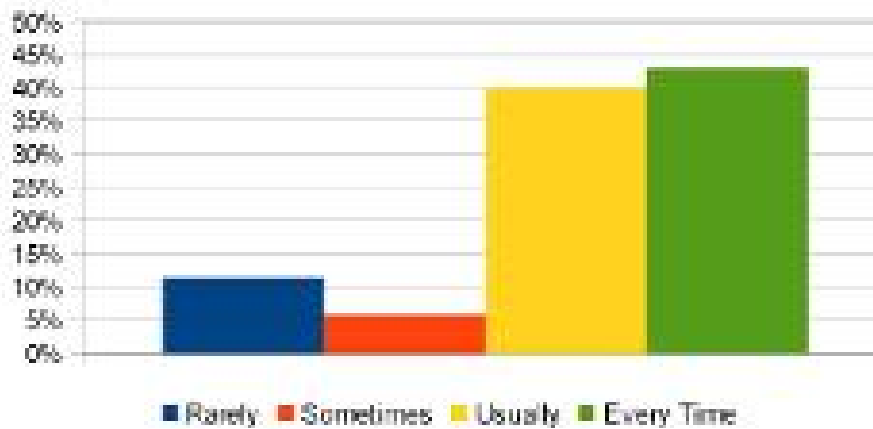
4. The Teacher's approach to teaching can be described as

Fair	5%
Good	45%
Very Good	40%
Excellent	9%



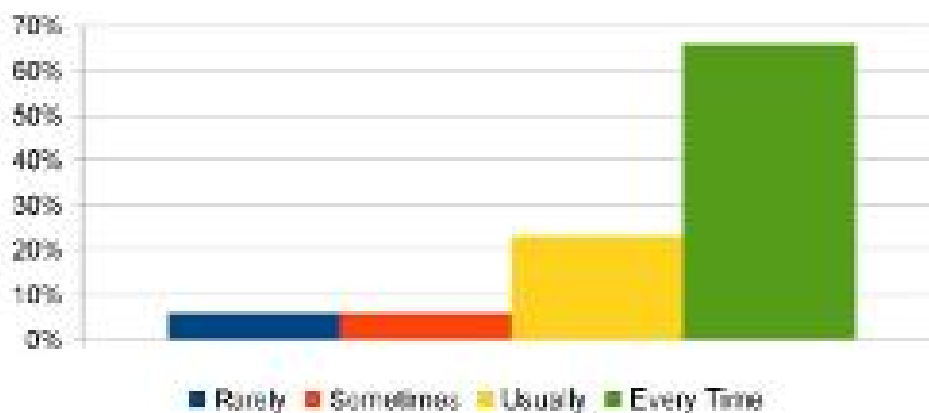
5. Were internal tests conducted on time?

Rarely	11%
Sometimes	6%
Usually	40%
Every Time	43%



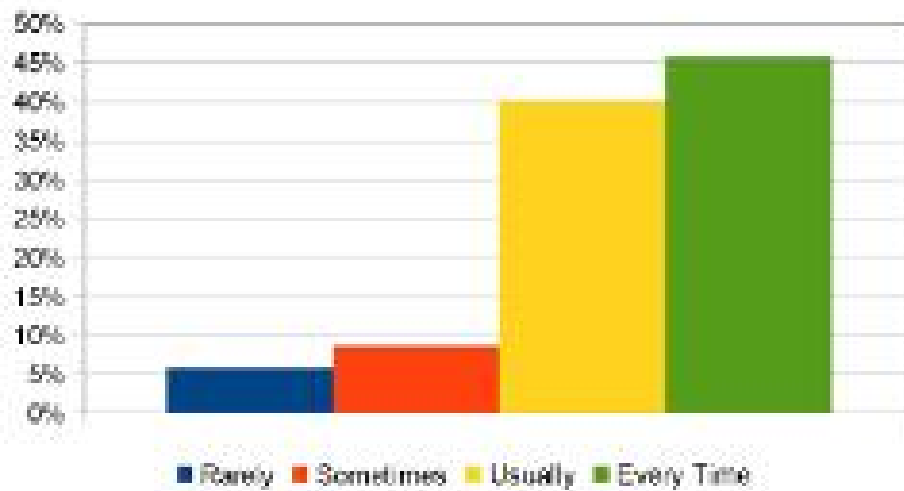
6. Are you given home assignments?

Rarely	6%
Sometimes	6%
Usually	23%
Every Time	65%



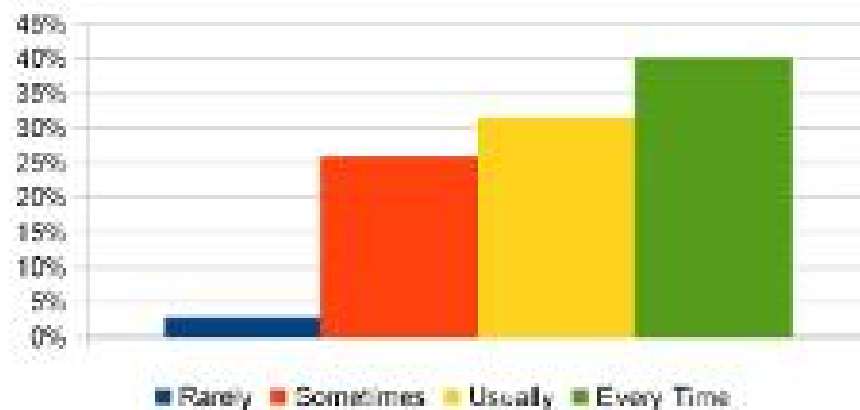
7. Is your performance in Tests/ assignment discussed with you?

Rarely	6%
Sometimes	9%
Usually	40%
Every Time	46%



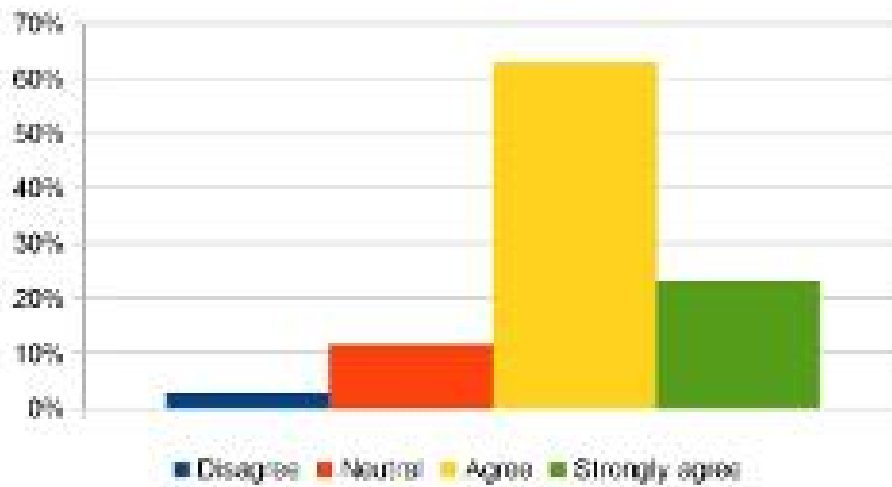
8. Teachers encourage students in preparing and presenting seminars.

Rarely	3%
Sometimes	26%
Usually	31%
Every Time	40%



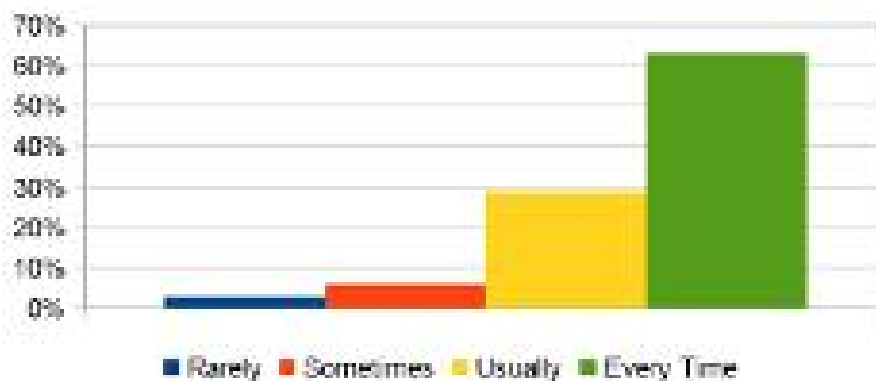
9. The College provides multiple opportunities to learn and grow.

Disagree	3%
Neutral	11%
Agree	63%
Strongly agree	23%



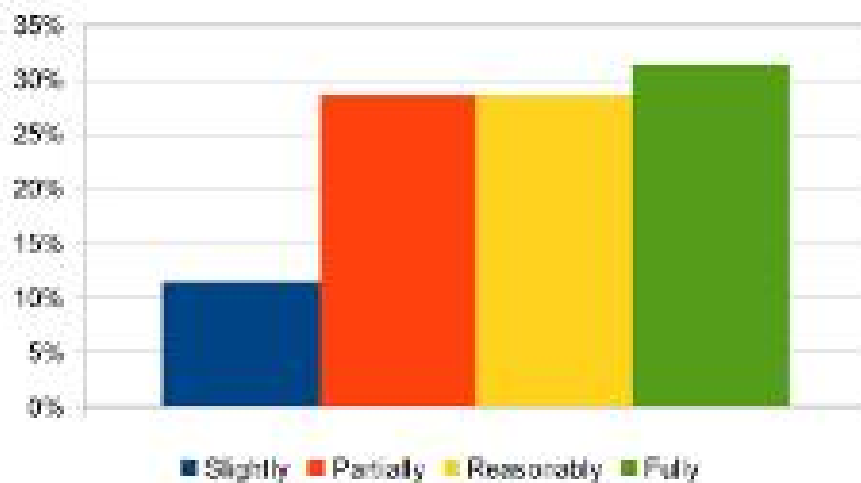
10. The Teachers illustrate the concepts through examples and illustrations

Rarely	3%
Sometimes	6%
Usually	29%
Every Time	63%



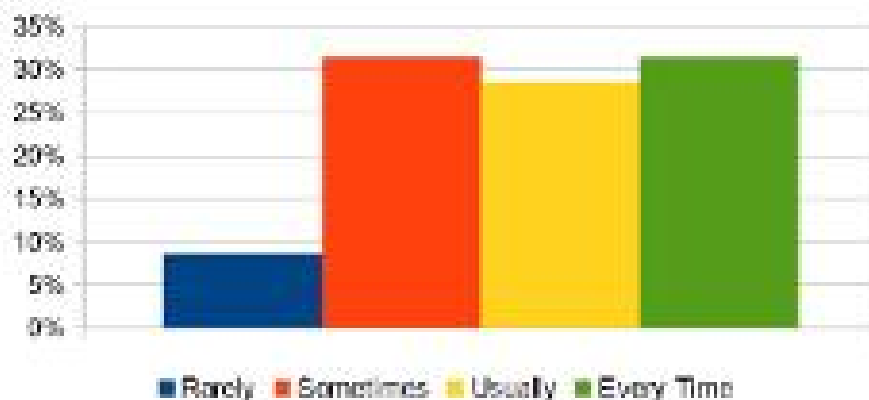
11. The Teachers identify your strengths and encourage you providing right level of challenges

Slightly	11%
Partially	29%
Reasonably	29%
Fully	31%



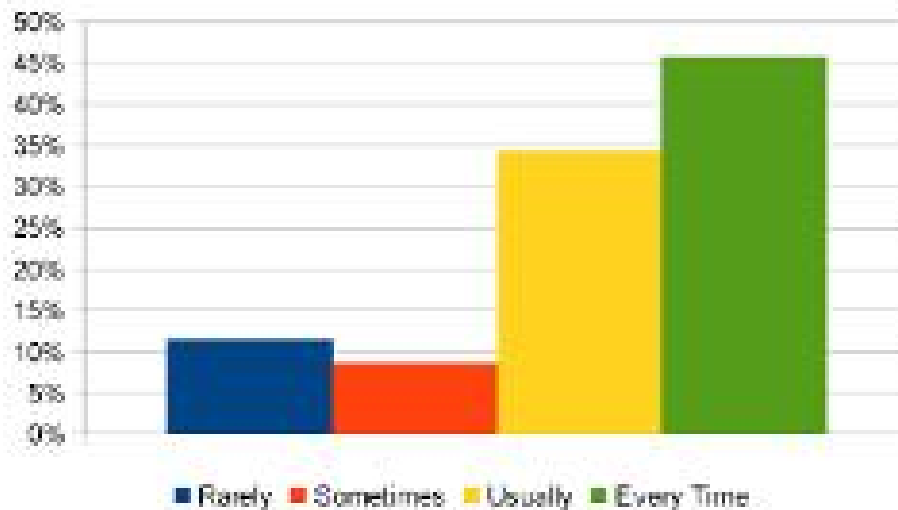
12. Teachers are able to identify your weaknesses and help you to overcome them.

Rarely	9%
Sometimes	31%
Usually	29%
Every Time	31%



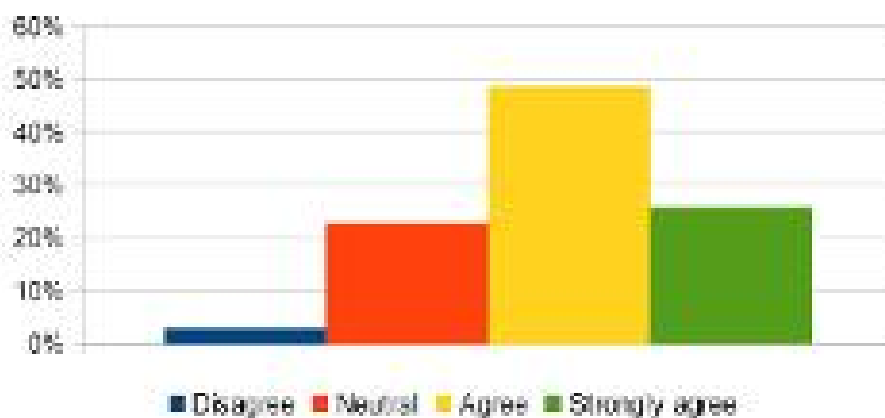
13. The College makes efforts to engage students in the monitoring, review and continuous quality improvement of teaching learning process.

Rarely	11%
Sometimes	9%
Usually	34%
Every Time	46%



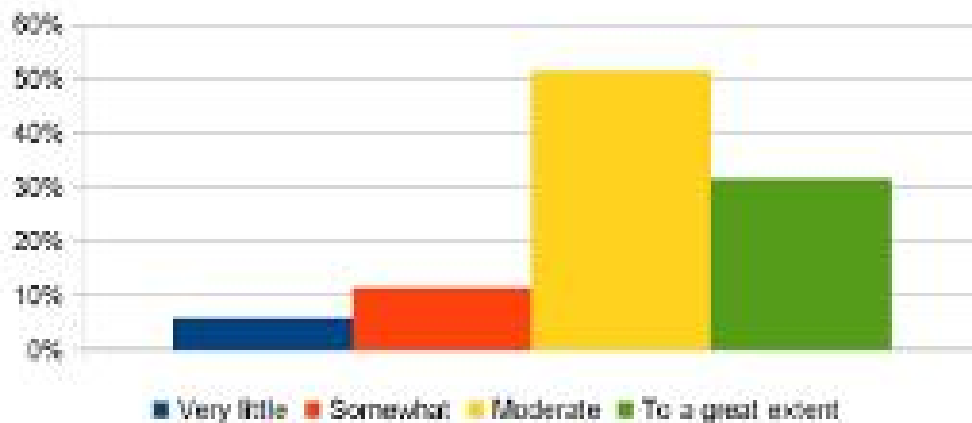
14. Teachers encourage you to participate in extracurricular activities.

Disagree	3%
Neutral	23%
Agree	49%
Strongly agree	26%



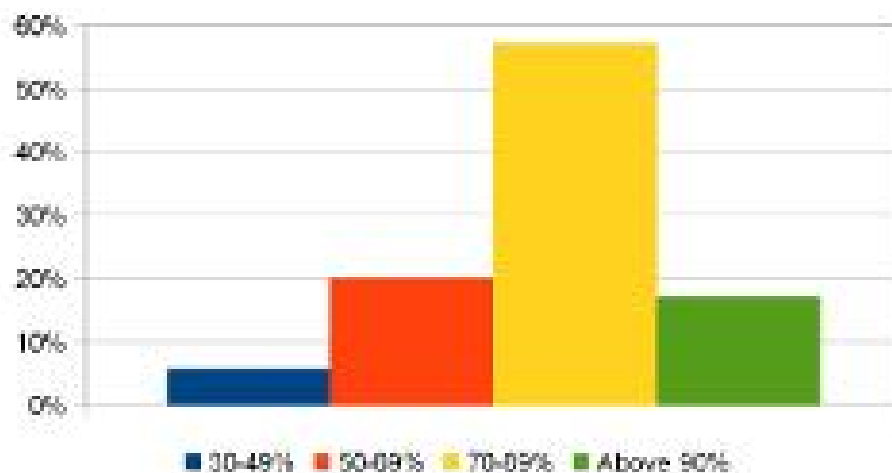
15. Efforts are made by the College/Teacher to inculcate soft skills, life skills and employability skills to make you ready for the world of work.

Very little	6%
Somewhat	11%
Moderate	51%
To a great extent	31%



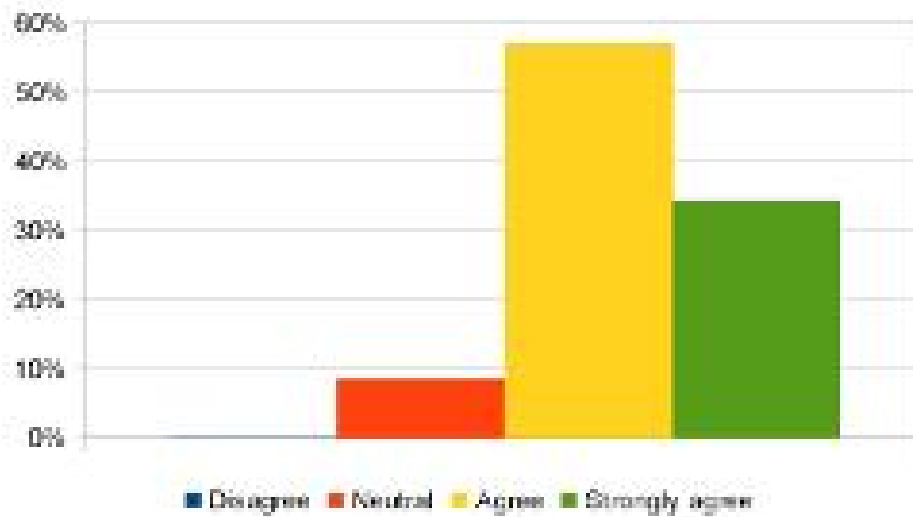
16. What percentage of Teachers use ICT tools while teaching.

30-49%	6%
50-69%	20%
70-89%	57%
Above 90%	17%



17. The overall quality of teaching-learning process in your College is very good.

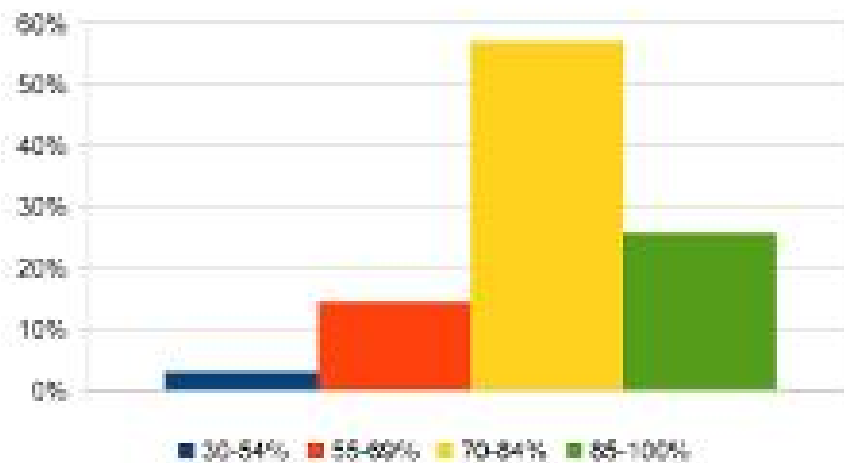
Disagree	0%
Neutral	9%
Agree	57%
Strongly agree	34%



B. C. A. III

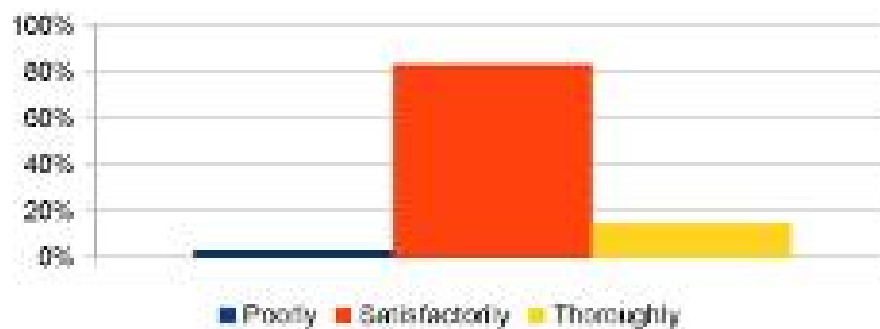
1. How much of the syllabus was covered in the class?

30-54%	3%
55-69%	14%
70-84%	57%
85-100%	26%



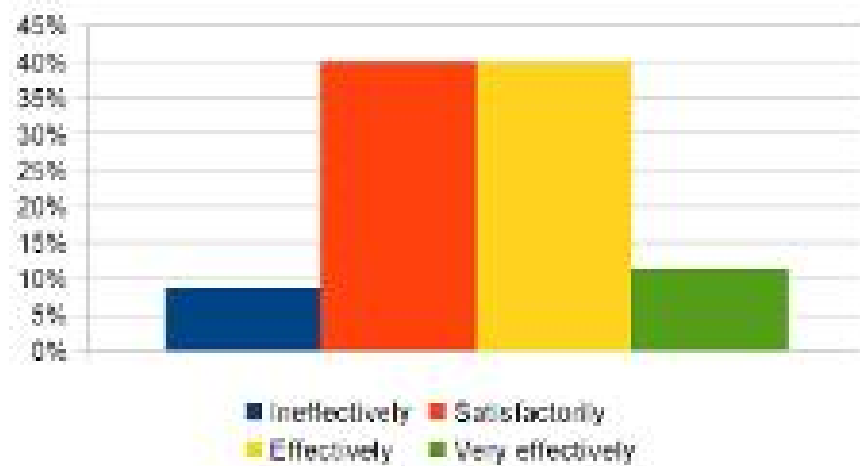
2. How well do the Teachers prepare for the classes?

Poorly	3%
Satisfactorily	83%
Thoroughly	14%



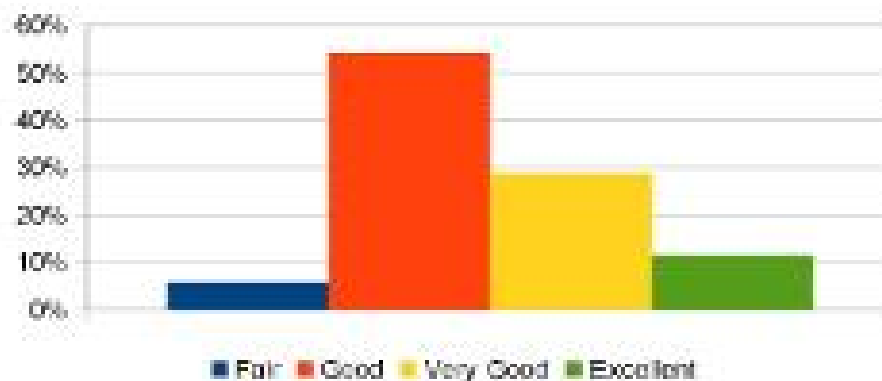
3. How well are the Teachers able to communicate?

Ineffectively	9%
Satisfactorily	40%
Effectively	40%
Very effectively	11%



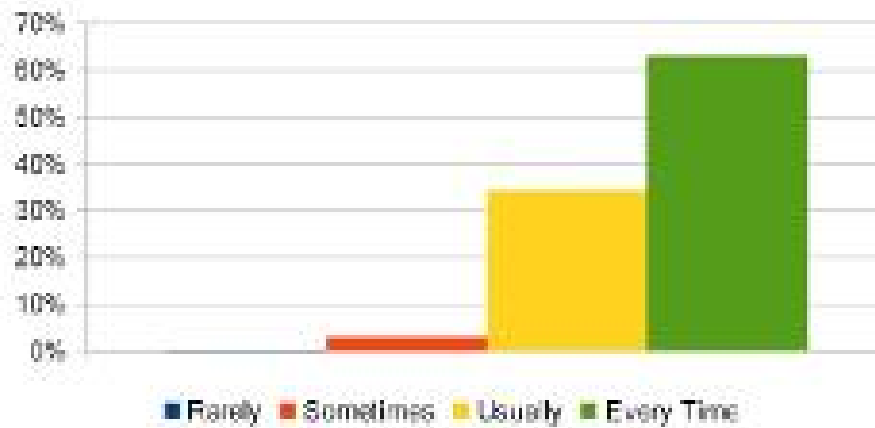
4. The Teacher's approach to teaching can be described as

Fair	6%
Good	54%
Very Good	29%
Excellent	11%



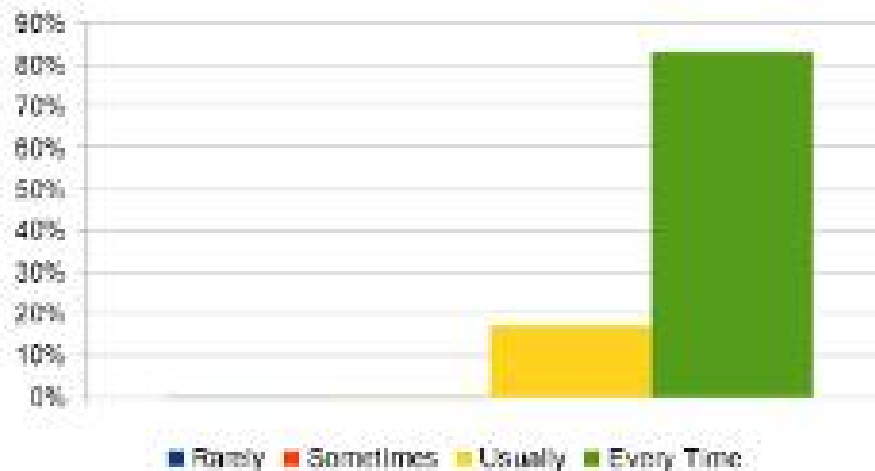
5. Were internal tests conducted on time?

Rarely	0%
Sometimes	3%
Usually	34%
Every Time	63%



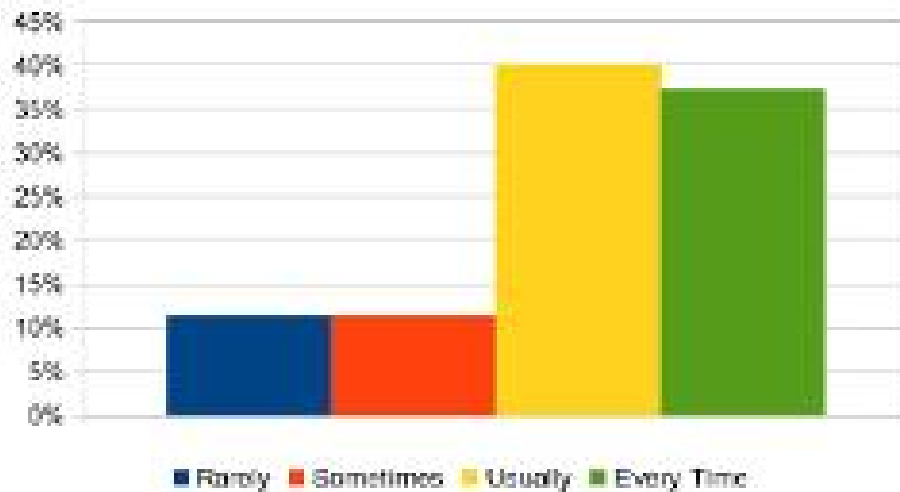
6. Are you given home assignments?

Rarely	0%
Sometimes	0%
Usually	17%
Every Time	83%



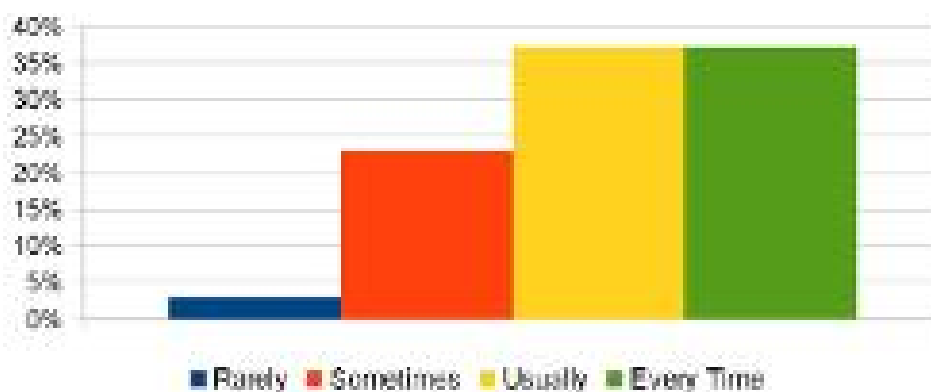
7. Is your performance in Tests/ assignment discussed with you?

Rarely	11%
Sometimes	11%
Usually	40%
Every Time	37%



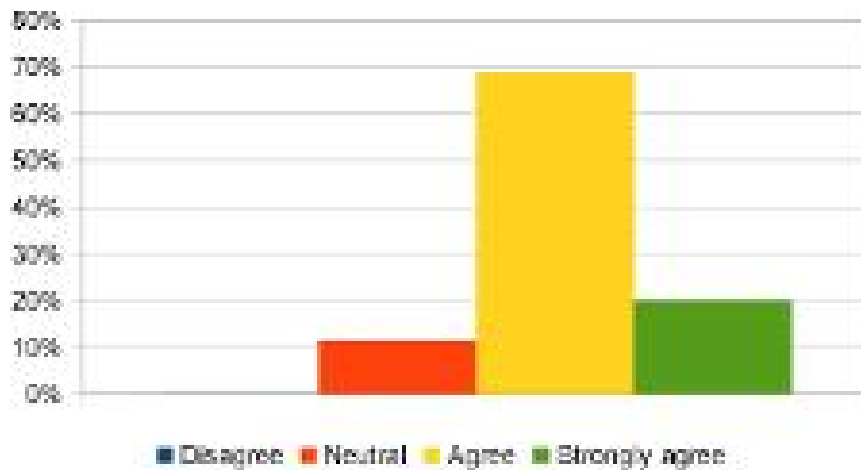
8. Teachers encourage students in preparing and presenting seminars.

Rarely	3%
Sometimes	23%
Usually	37%
Every Time	37%



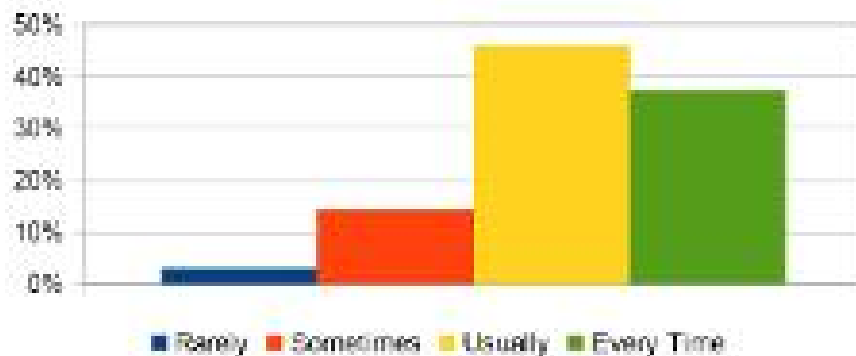
9. The College provides multiple opportunities to learn and grow.

Disagree	0%
Neutral	11%
Agree	69%
Strongly agree	20%



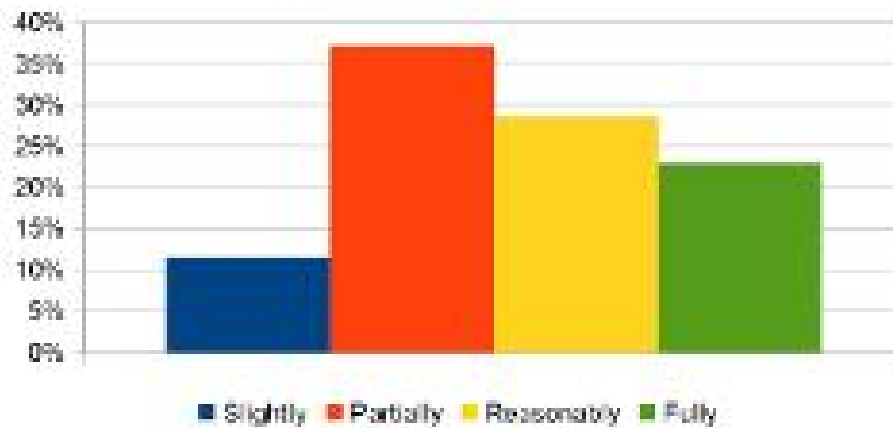
10. The Teachers illustrate the concepts through examples and illustrations

Rarely	3%
Sometimes	14%
Usually	46%
Every Time	37%



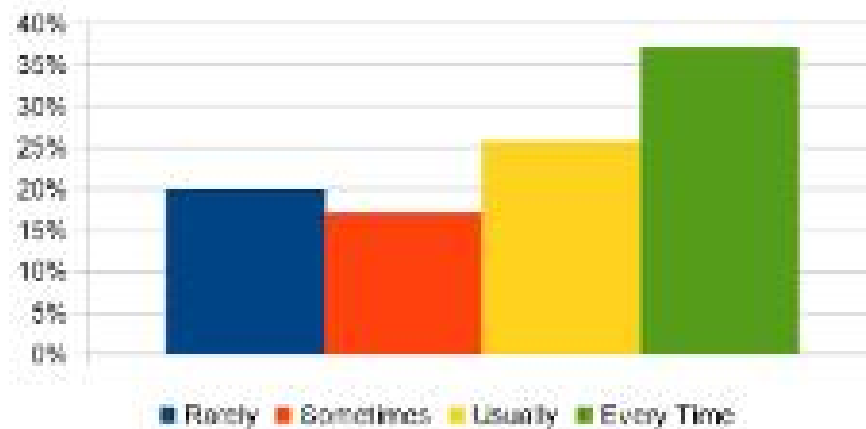
11. The Teachers identify your strengths and encourage you providing tight level of challenges

Slightly	11%
Partially	37%
Reasonably	29%
Fully	23%



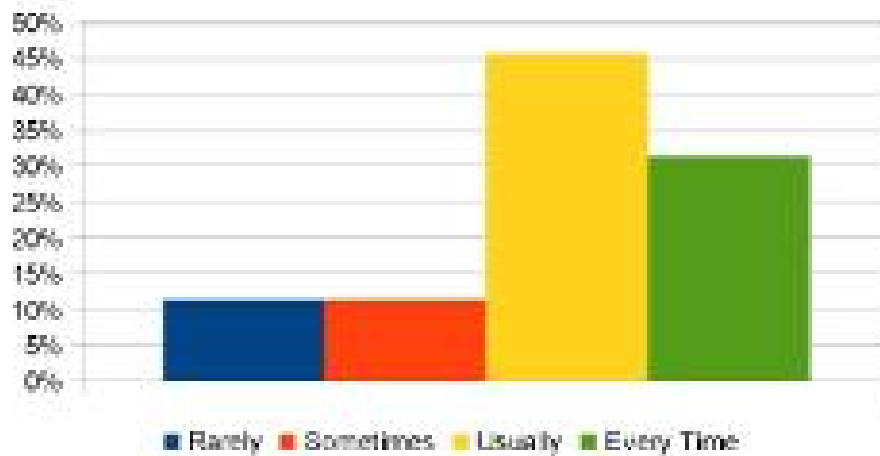
12. Teachers are able to identify your weaknesses and help you to overcome them.

Rarely	20%
Sometimes	17%
Usually	26%
Every Time	37%



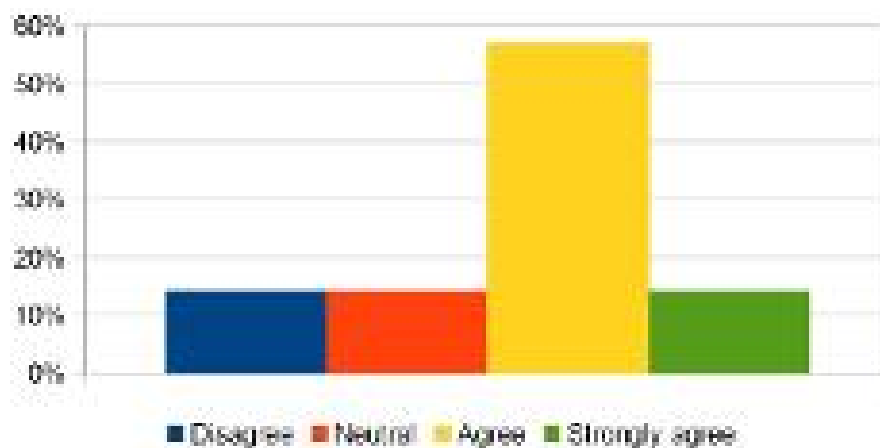
13. The College makes efforts to engage students in the monitoring, review and continuous quality improvement of teaching learning process.

Rarely	11%
Sometimes	11%
Usually	46%
Every Time	31%



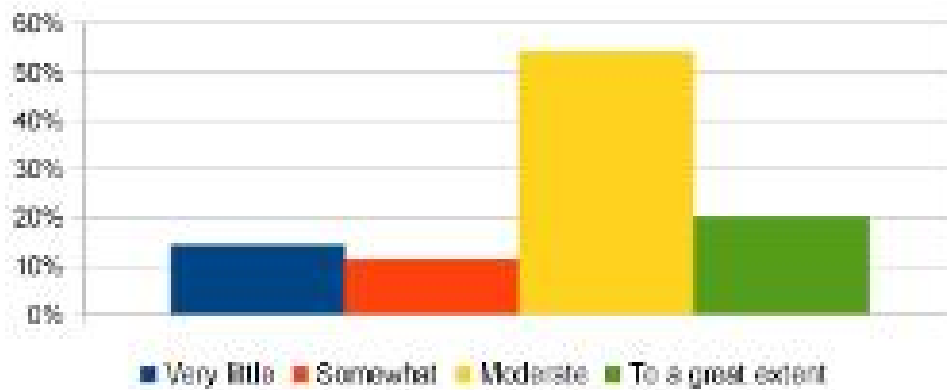
14. Teachers encourage you to participate in extracurricular activities.

Disagree	14%
Neutral	14%
Agree	57%
Strongly agree	14%



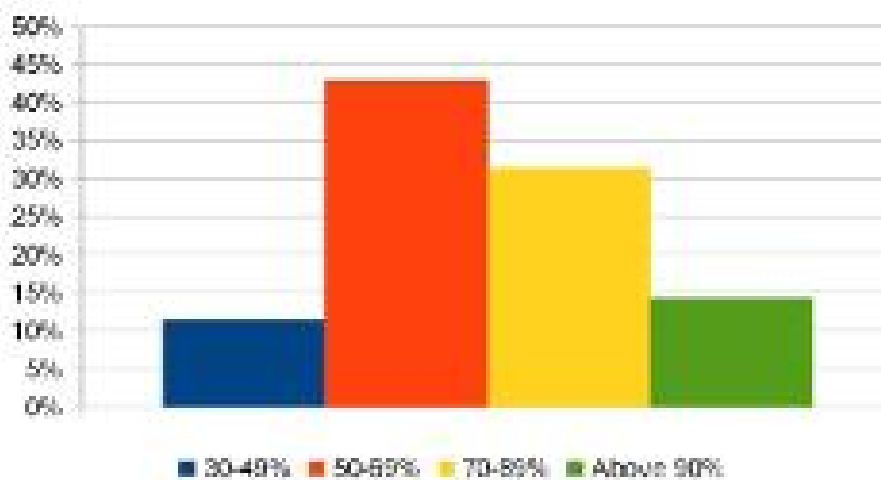
15. Efforts are made by the College/Teacher to inculcate soft skills, life skills and employability skills to make you ready for the world of work.

Very little	14%
Somewhat	11%
Moderate	54%
To a great extent	20%



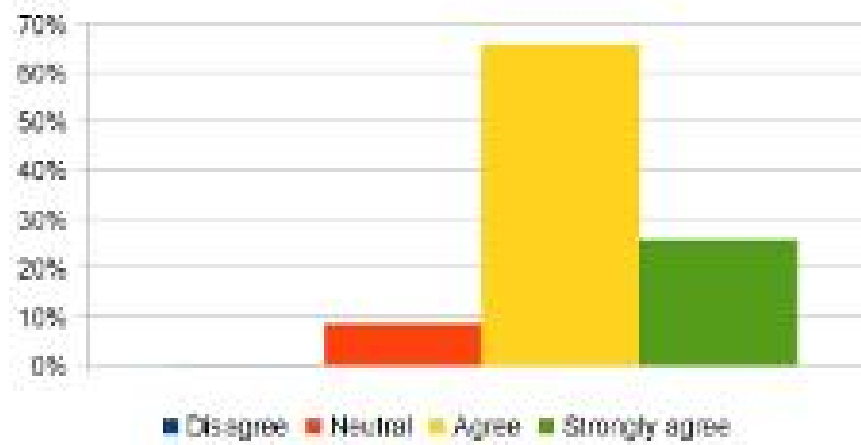
16. What percentage of Teachers use ICT tools while teaching,

30-49%	11%
50-69%	43%
70-89%	31%
Above 90%	14%



17. The overall quality of teaching-learning process in your College is very good.

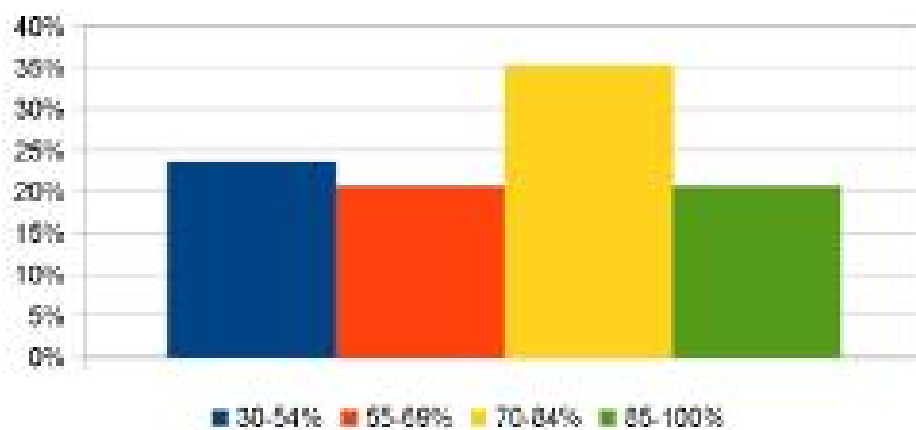
Disagree	0%
Neutral	9%
Agree	66%
Strongly agree	26%



M. Com I

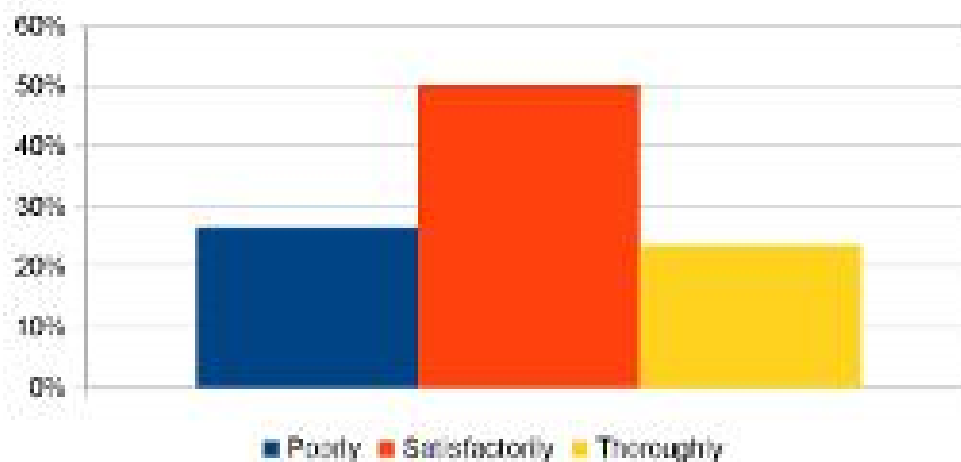
1. How much of the syllabus was covered in the class?

30-54%	24%
55-69%	21%
70-84%	35%
85-100%	21%



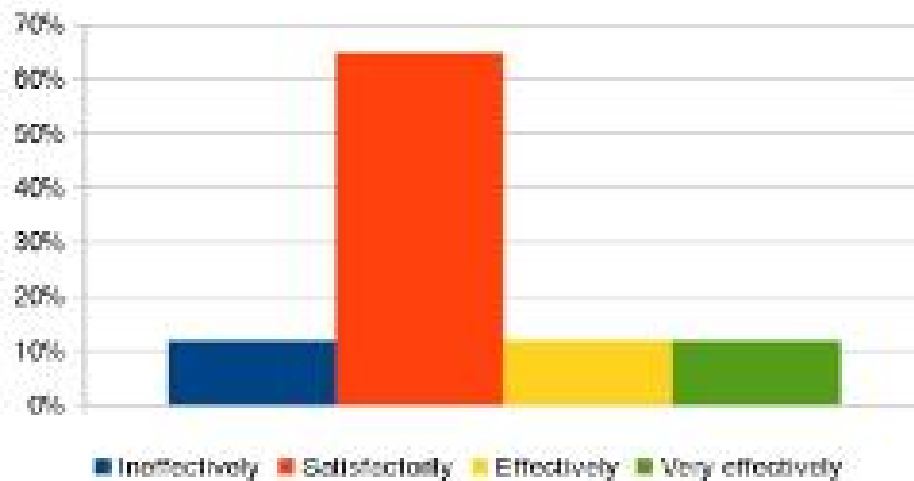
2. How well do the Teachers prepare for the classes?

Poorly	26%
Satisfactorily	50%
Thoroughly	24%



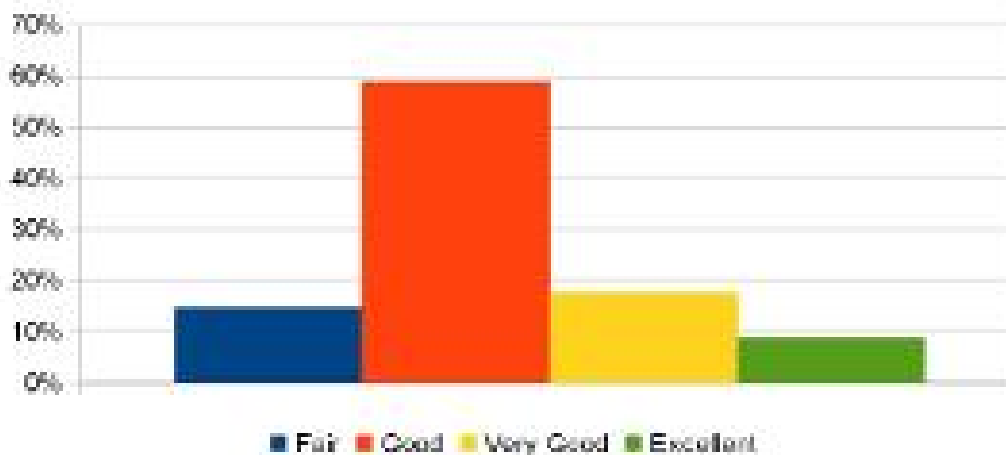
3. How well are the Teachers able to communicate?

Ineffectively	12%
Satisfactorily	65%
Effectively	12%
Very effectively	12%



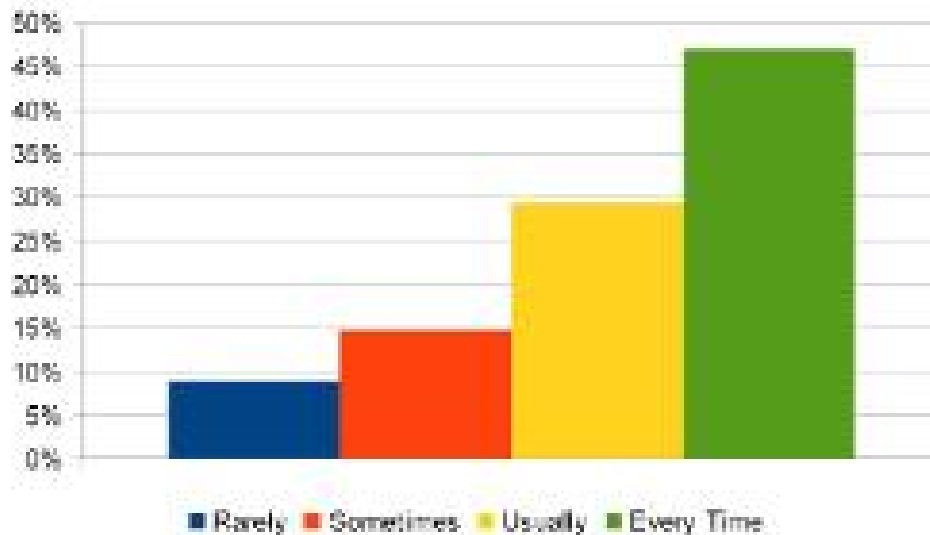
4. The Teacher's approach to teaching can be described as

Fair	15%
Good	59%
Very Good	18%
Excellent	9%



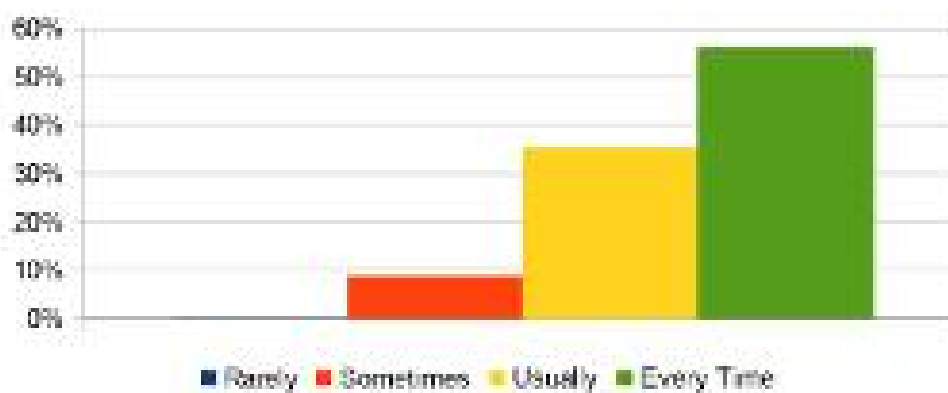
5. Were internal tests conducted on time?

Rarely	9%
Sometimes	15%
Usually	29%
Every Time	47%



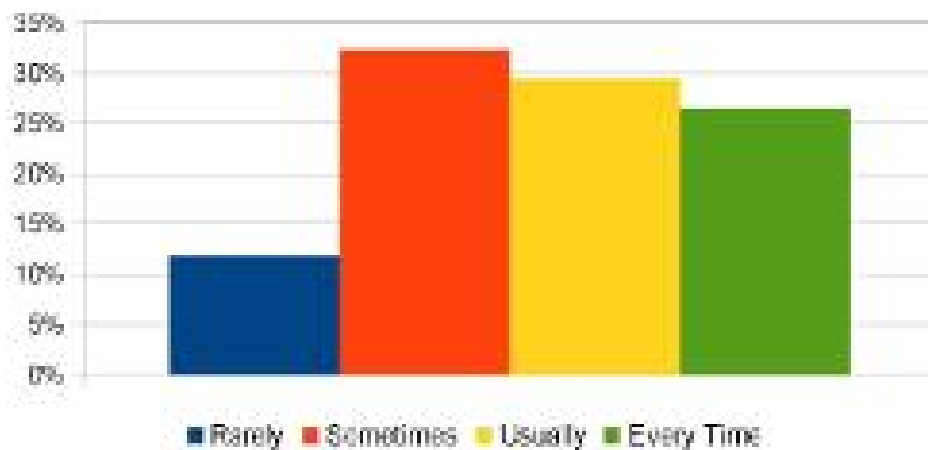
6. Are you given home assignments?

Rarely	0%
Sometimes	9%
Usually	35%
Every Time	56%



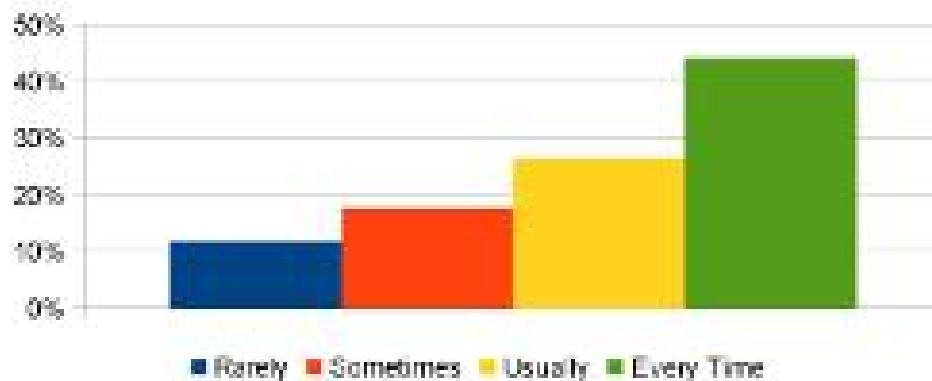
7. Is your performance in Tests/ assignment discussed with you?

Rarely	12%
Sometimes	32%
Usually	29%
Every Time	26%



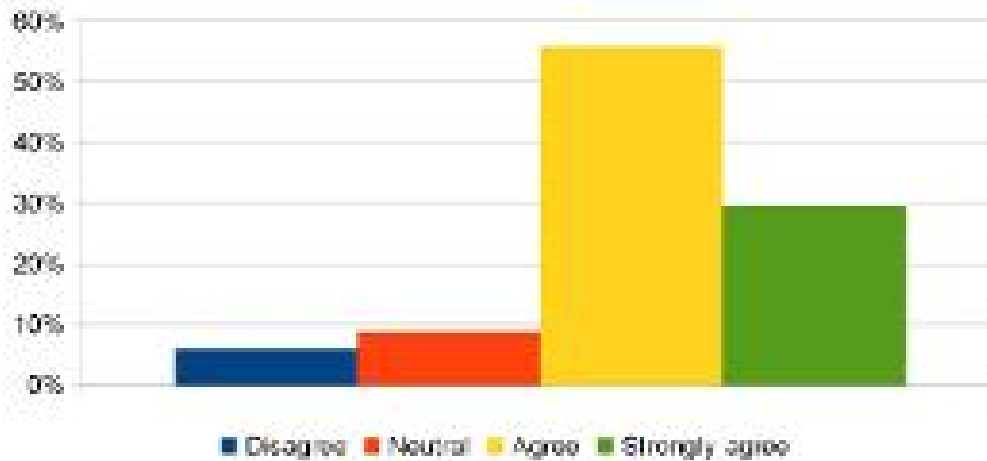
8. Teachers encourage students in preparing and presenting seminars.

Rarely	12%
Sometimes	18%
Usually	26%
Every Time	44%



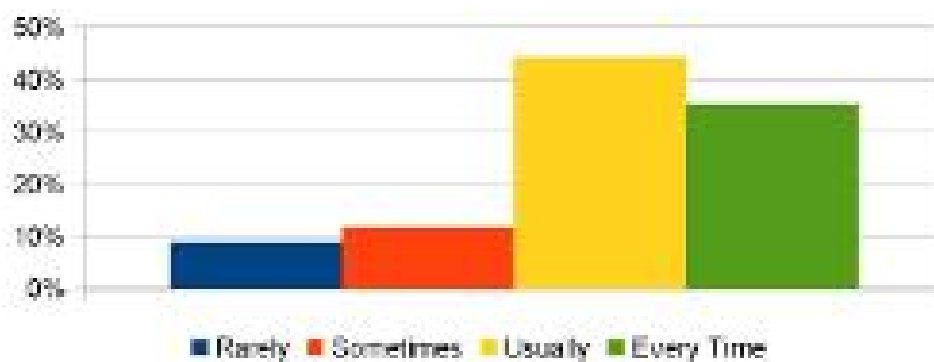
9. The College provides multiple opportunities to learn and grow.

Disagree	6%
Neutral	9%
Agree	56%
Strongly agree	29%



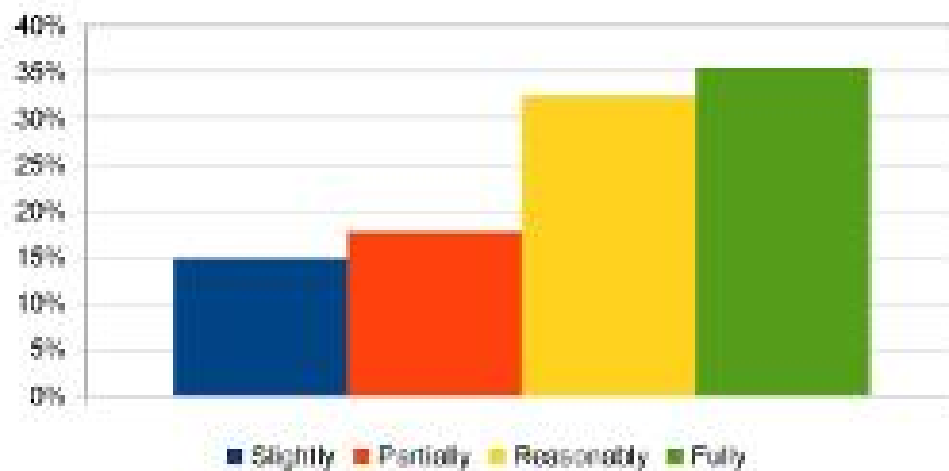
10. The Teachers illustrate the concepts through examples and illustrations

Rarely	9%
Sometimes	12%
Usually	44%
Every Time	35%



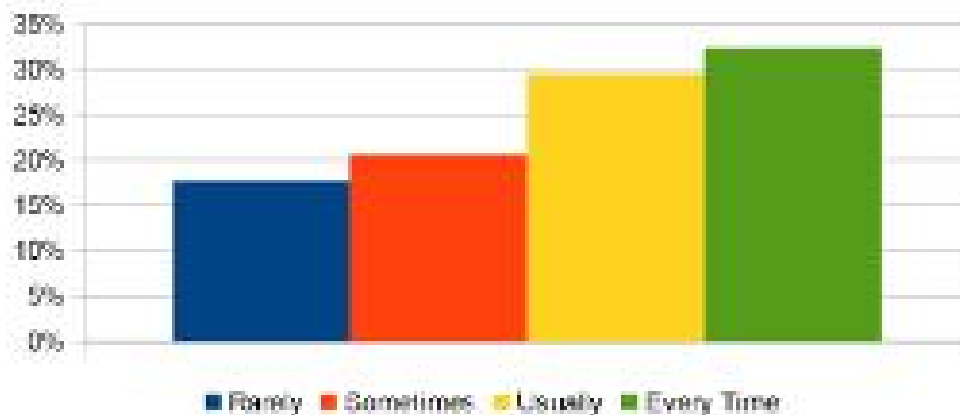
11. The Teachers identify your strengths and encourage you providing tight level of challenges

Slightly	15%
Partially	18%
Reasonably	32%
Fully	35%



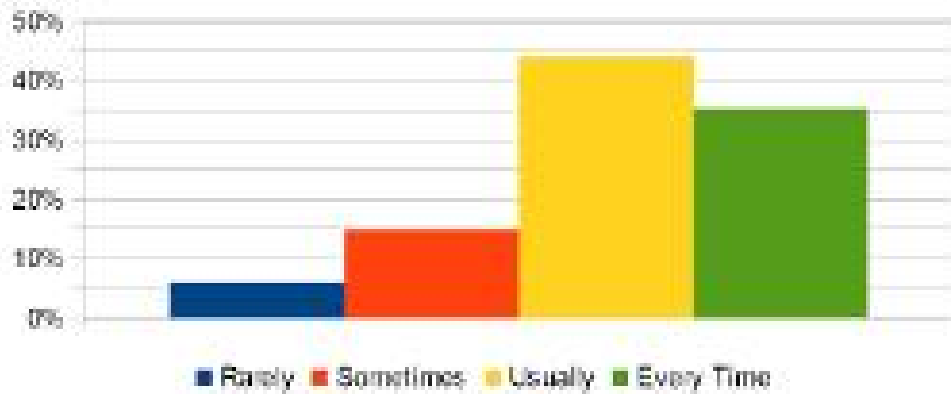
12. Teachers are able to identify your weaknesses and help you to overcome them.

Rarely	18%
Sometimes	21%
Usually	29%
Every Time	32%



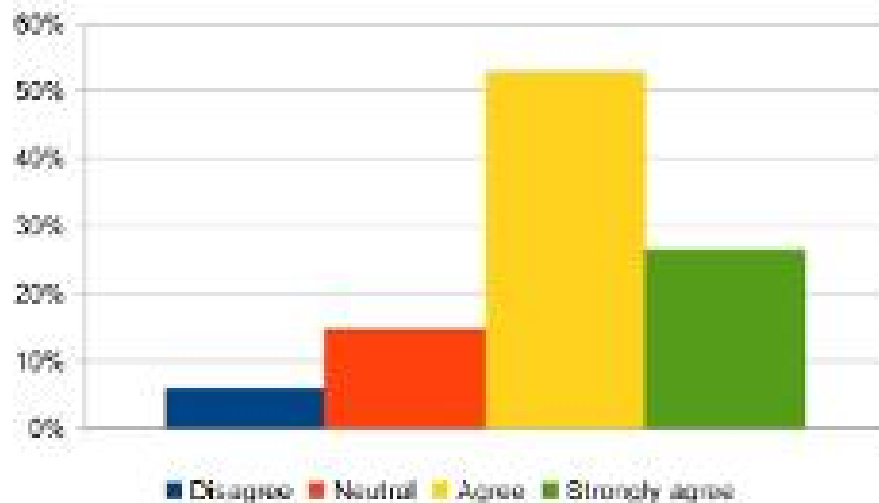
13. The College makes efforts to engage students in the monitoring, review and continuous quality improvement of teaching learning process.

Rarely	6%
Sometimes	15%
Usually	44%
Every Time	35%



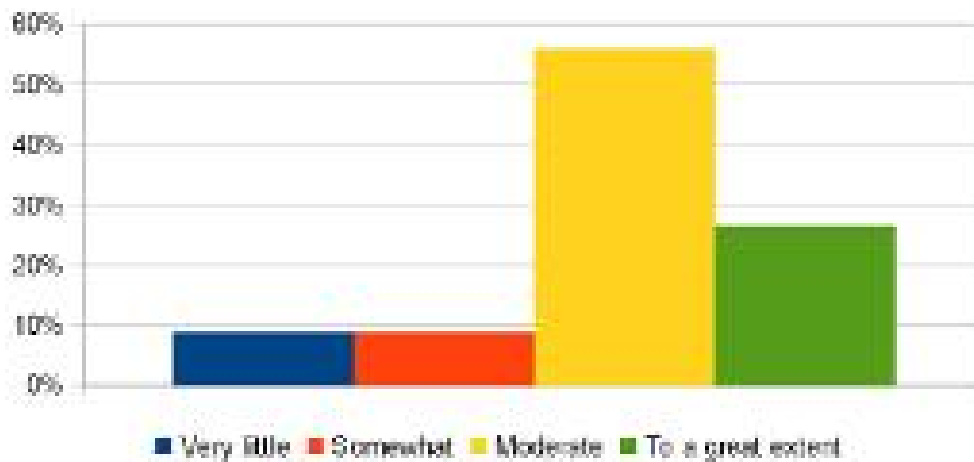
14. Teachers encourage you to participate in extracurricular activities.

Disagree	6%
Neutral	15%
Agree	53%
Strongly agree	26%



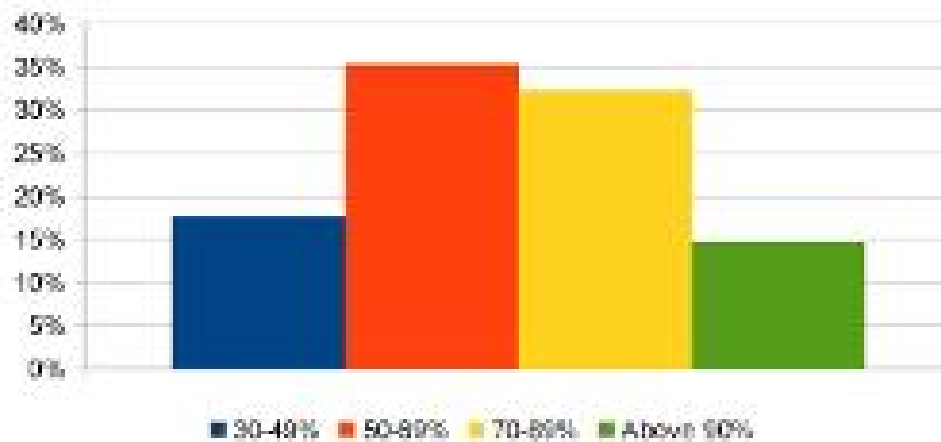
15. Efforts are made by the College/Teacher to inculcate soft skills, life skills and employability skills to make you ready for the world of work.

Very little	9%
Somewhat	9%
Moderate	56%
To a great extent	26%



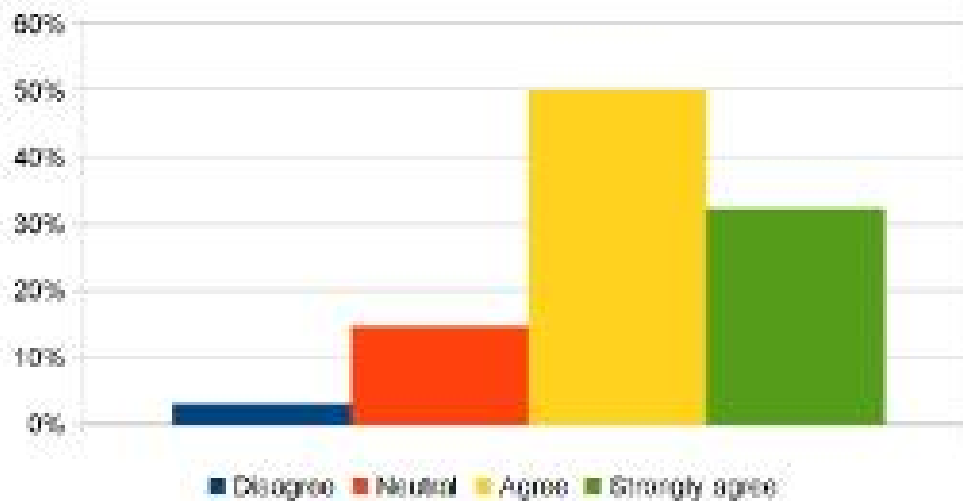
16. What percentage of Teachers use ICT tools while teaching.

30-49%	18%
50-69%	35%
70-89%	32%
Above 90%	15%



17. The overall quality of teaching-learning process in your College is very good.

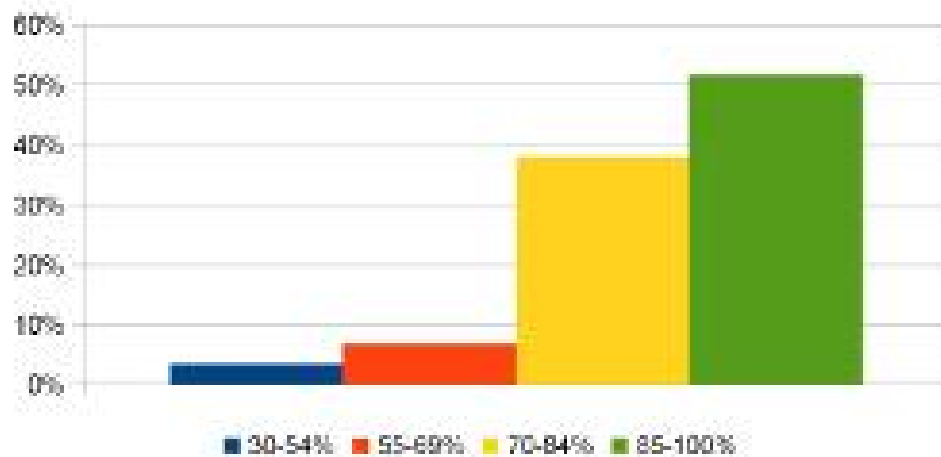
Disagree	3%
Neutral	15%
Agree	50%
Strongly agree	32%



M. Com II

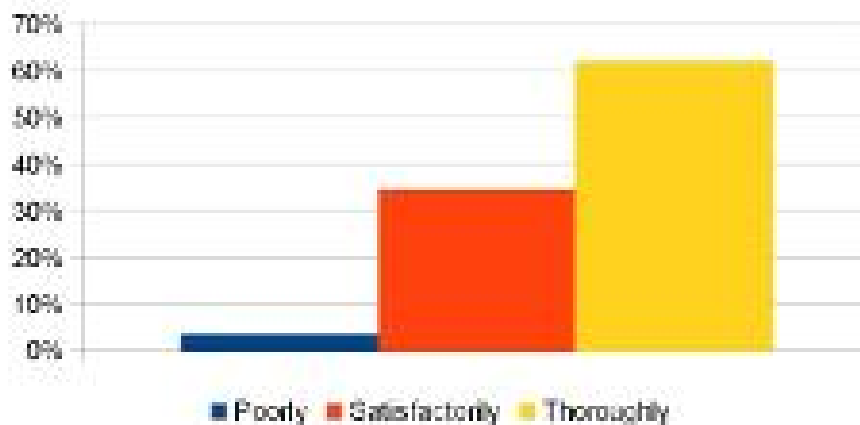
1. How much of the syllabus was covered in the class?

30-54%	3%
55-69%	7%
70-84%	38%
85-100%	52%



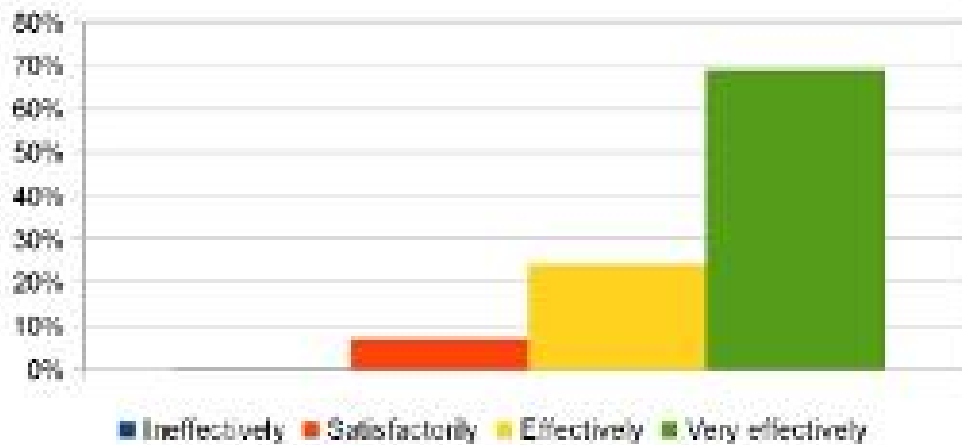
2. How well do the Teachers prepare for the classes?

Poorly	3%
Satisfactorily	34%
Thoroughly	62%



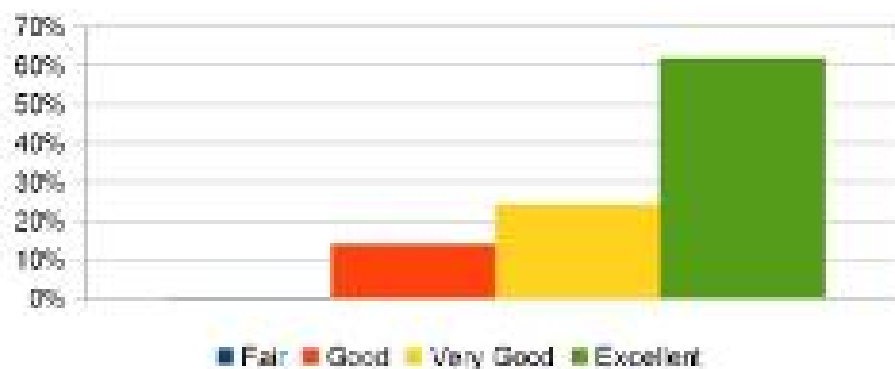
3. How well are the Teachers able to communicate?

Ineffectively	0%
Satisfactorily	7%
Effectively	24%
Very effectively	69%



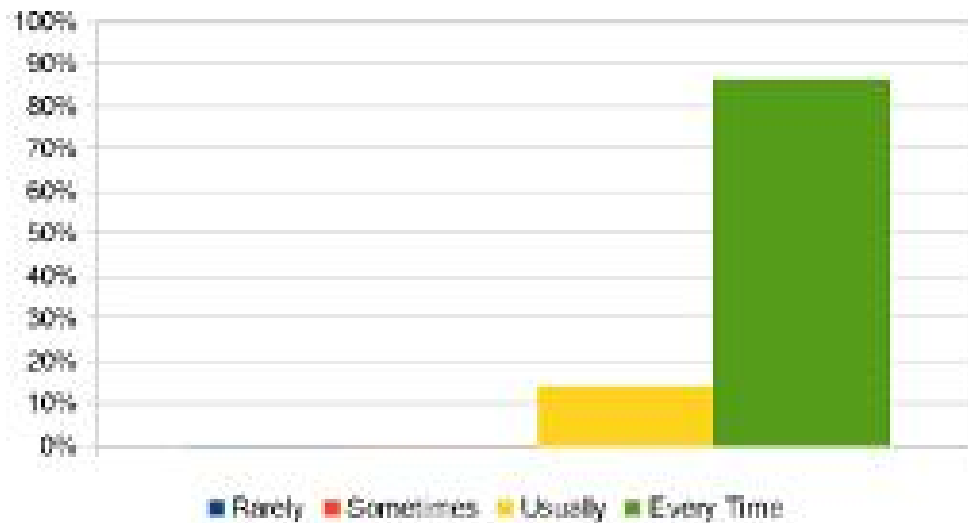
4. The Teacher's approach to teaching can be described as

Fair	0%
Good	14%
Very Good	24%
Excellent	62%



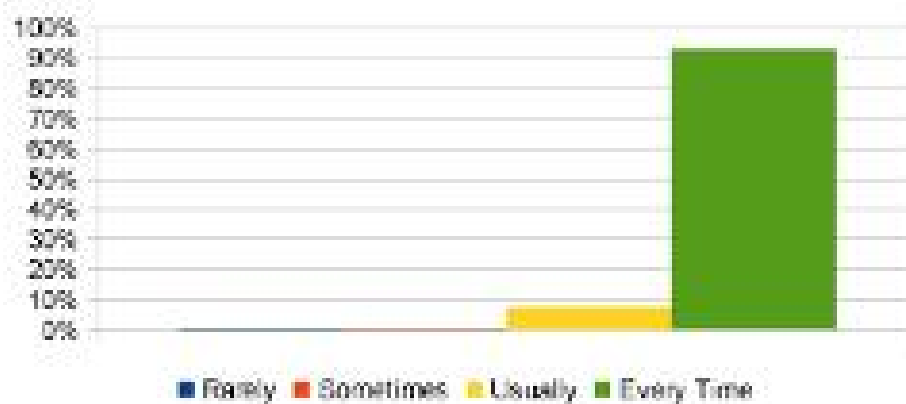
5. Were internal tests conducted on time?

Rarely	0%
Sometimes	0%
Usually	14%
Every Time	86%



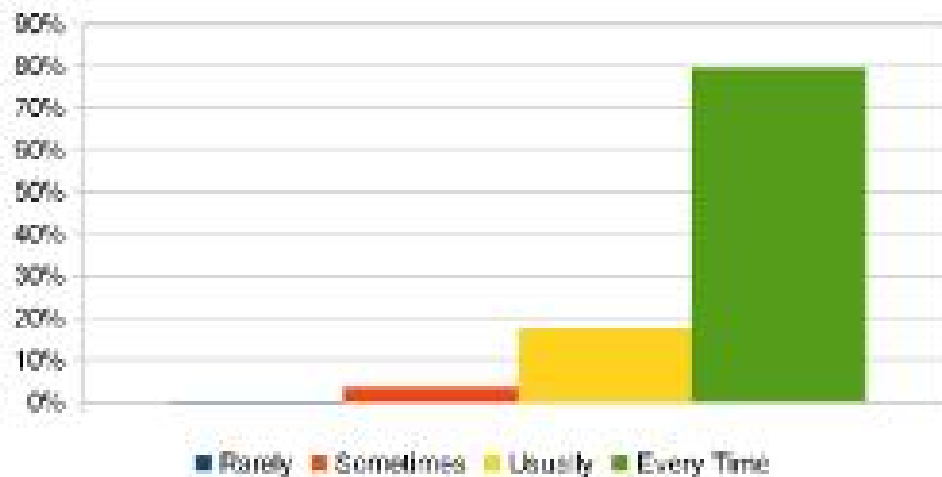
6. Are you given home assignments?

Rarely	0%
Sometimes	0%
Usually	7%
Every Time	93%



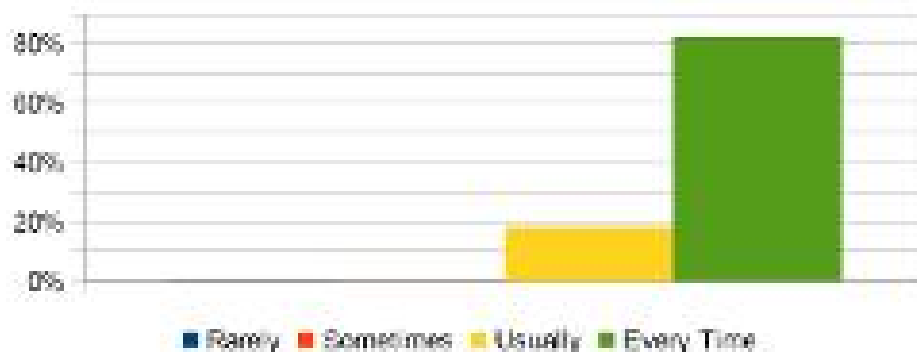
7. Is your performance in Tests/ assignment discussed with you?

Rarely	0%
Sometimes	3%
Usually	17%
Every Time	79%



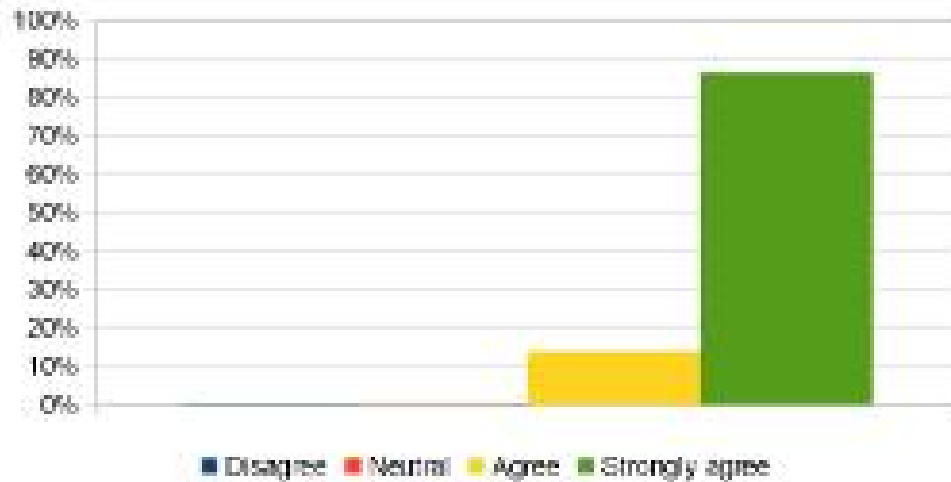
8. Teachers encourage students in preparing and presenting seminars.

Rarely	0%
Sometimes	0%
Usually	18%
Every Time	82%



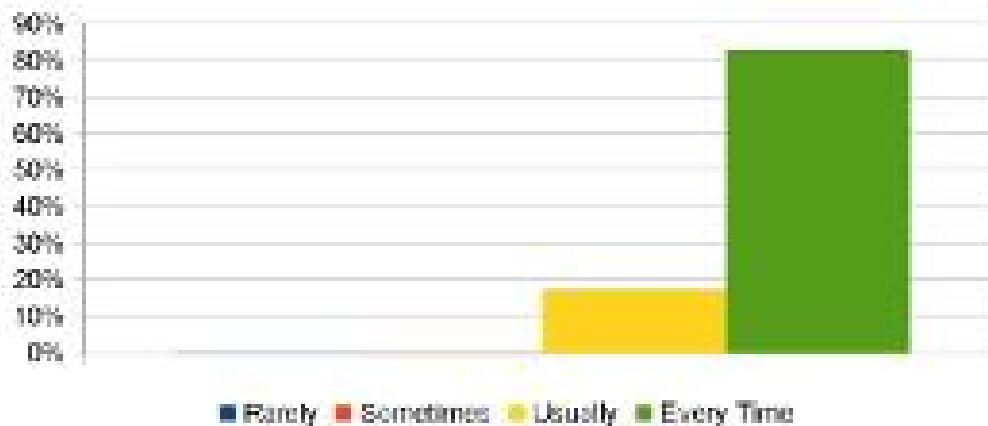
9. The College provides multiple opportunities to learn and grow.

Disagree	0%
Neutral	0%
Agree	14%
Strongly agree	86%



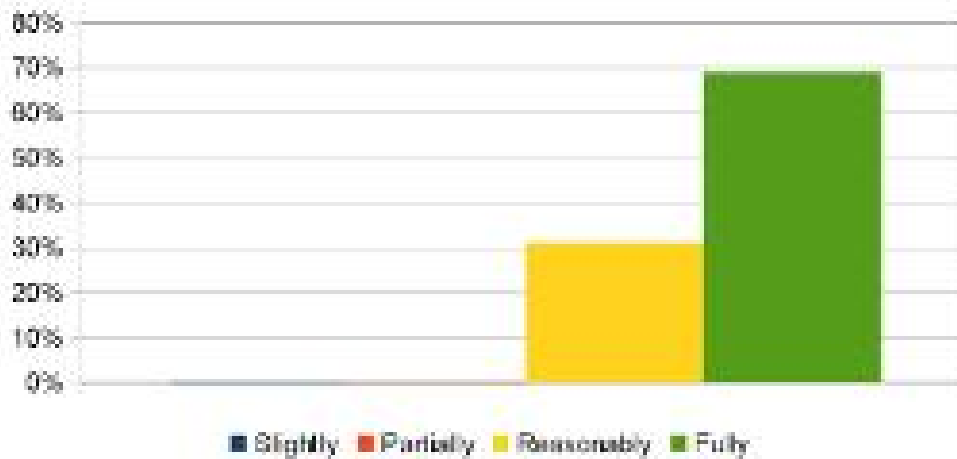
10. The Teachers illustrate the concepts through examples and illustrations.

Rarely	0%
Sometimes	0%
Usually	17%
Every Time	83%



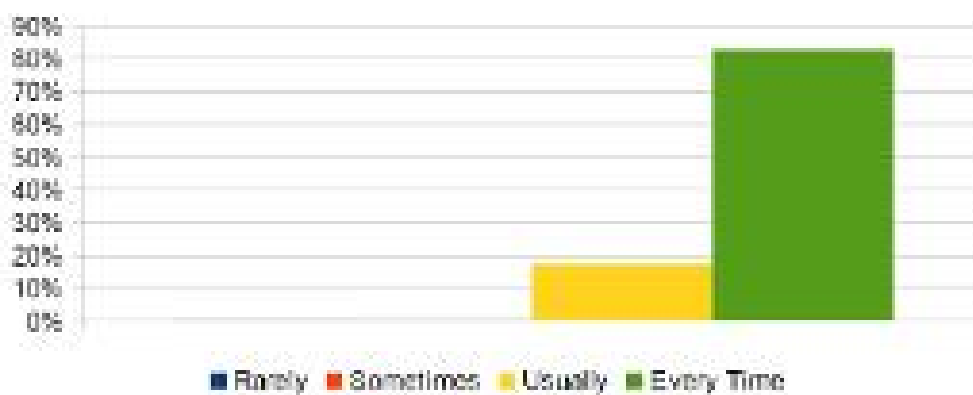
11. The Teachers identify your strengths and encourage you providing tight level of challenges

Slightly	0%
Partially	0%
Reasonably	31%
Fully	69%



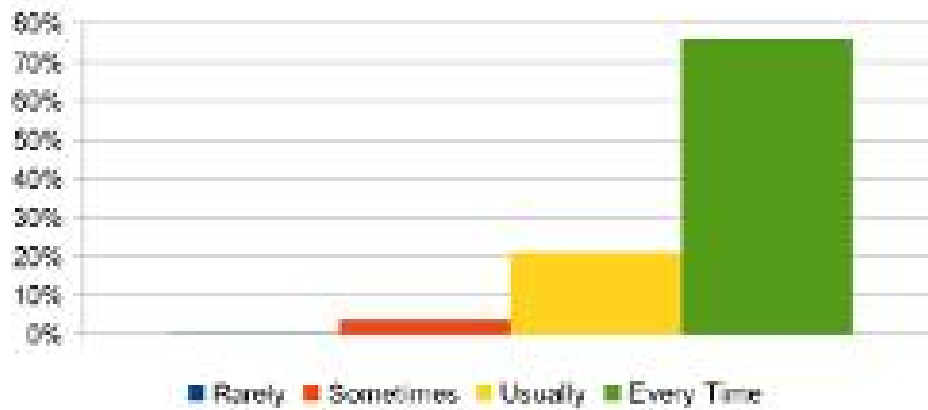
12. Teachers are able to identify your weaknesses and help you to overcome them.

Rarely	0%
Sometimes	0%
Usually	17%
Every Time	83%



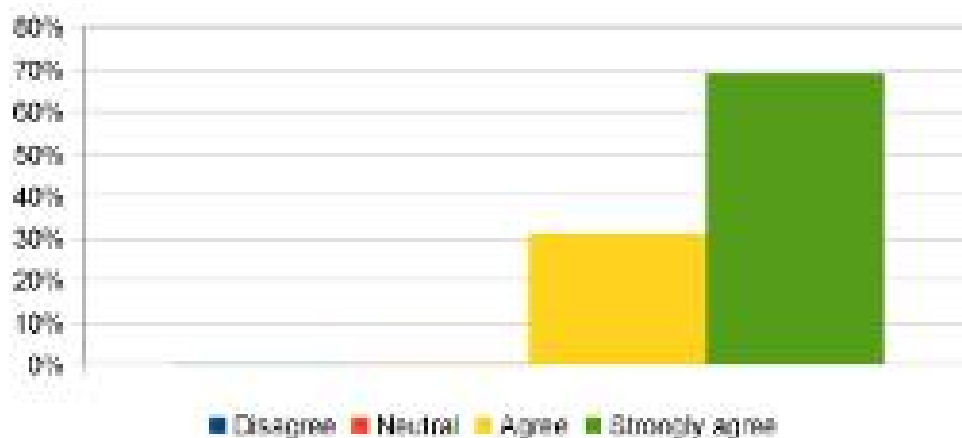
13. The College makes efforts to engage students in the monitoring, review and continuous quality improvement of teaching learning process.

Rarely	0%
Sometimes	3%
Usually	21%
Every Time	76%



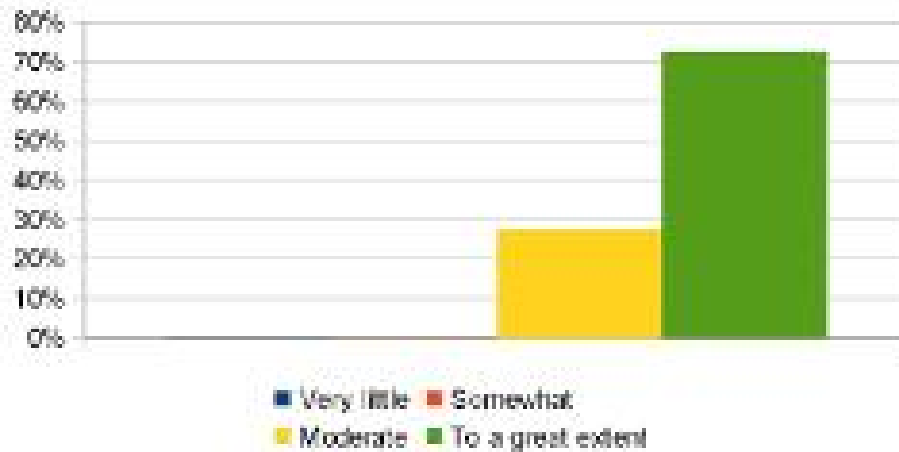
14. Teachers encourage you to participate in extracurricular activities.

Disagree	0%
Neutral	0%
Agree	31%
Strongly agree	69%



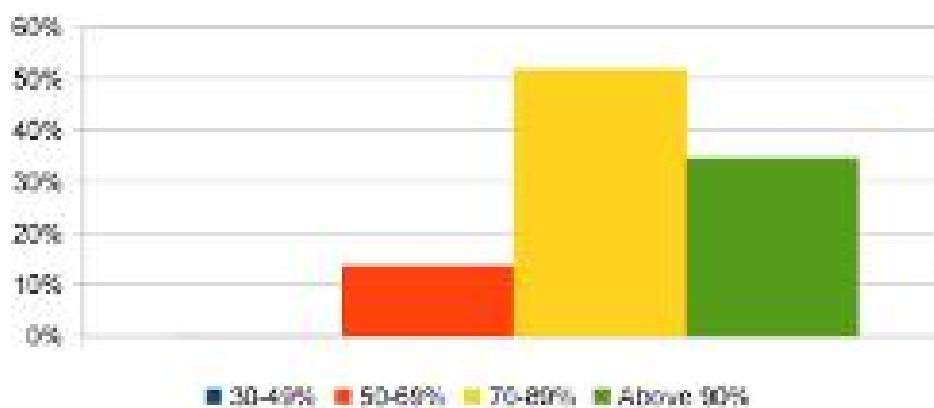
15. Efforts are made by the College/Teacher to inculcate soft skills, life skills and employability skills to make you ready for the world of work.

Very little	0%
Somewhat	0%
Moderate	28%
To a great extent	72%



16. What percentage of Teachers use ICT tools while teaching.

30-49%	0%
50-69%	14%
70-89%	52%
Above 90%	34%



17. The overall quality of teaching-learning process in your College is very good.

Disagree	0%
Neutral	0%
Agree	21%
Strongly agree	79%

